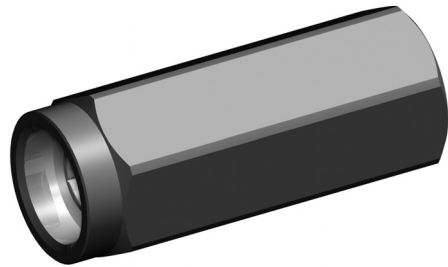




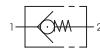
Stainless Steel

VU 2-WAY HIGH PRESSURE BALL VALVES

VU G 1/2 SS



CHECK VALVE



Type and way of valve
VU check valves

Valves dimension of inch

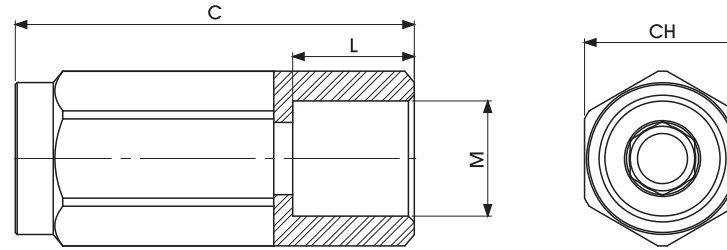
GAS	ANSI/ASME
DIN/ISO 228	B1.20.1 NPT
G 1/4	N 1/4
G 3/8	N 3/8
G 1/2	N 1/2
G 3/4	N 3/4
G 1"1/4	N 1"1/4
G 1"1/2	N 1"1/2
G 2"	N 2"

Material
Stainless steel
SS

Specifications

- Type: check valve VU
- Body: exagone
- Material: 1,4404
- Ball seats: from 1/4 to 2"
- Operating pressure: PN500
- Temp range: -60°C to +230°C depending on seal material selected

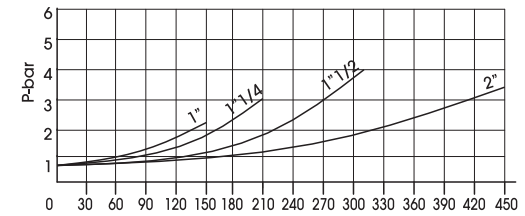
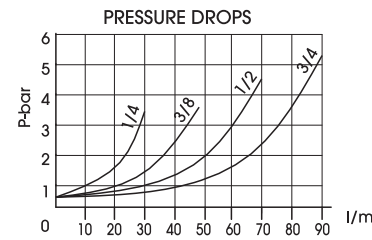
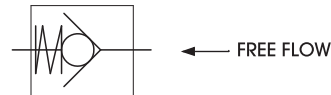
"The company reserves the right to operate dimensional changes without prior notice".



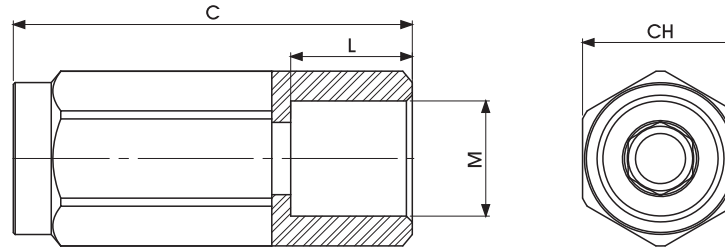
VU DIN ISO 228 BSP
Standard

TYPE	PN	DN	MAX FLOW L/m	CV GPM	CRACKING PRESSURE	C	M	L	CH	Kg	ITEM CODE
VU G 1/4	50 MPa	6	30	8	0.4/0.7 BAR	62	G 1/4	15,5	22	0,1	GC2GGT150440000
VU G 3/8	50 MPa	10	48	15	0.4/0.7 BAR	68	G 3/8	15,5	27	0,2	GC2GGT250440000
VU G 1/2	50 MPa	13	70	20	0.4/0.7 BAR	77	G 1/2	17	32	0,35	GC2GGT350440000
VU G 3/4	40 MPa	20	95	25	0.4/0.7 BAR	88	G 3/4	21	36	0,5	GC2GGT440440000
VU G 1"	35 MPa	25	150	40	0.4/0.7 BAR	105	G 1"	24	46	0,7	GC2GGT530440000
VU G 1" 1/4	35 MPa	32	210	55	1 BAR	135	G 1" 1/4	24	55	1,65	GC2GGT630440000
VU G 1" 1/2	35 MPa	40	320	85	1 BAR	145	G 1" 1/2	24	65	4,2	GC2GGT730440000
VU G 2"	35 MPa	50	460	125	1 BAR	160	G 2"	27	75	7,5	GC2GGT830440000

HYDRAULIC DIAGRAM



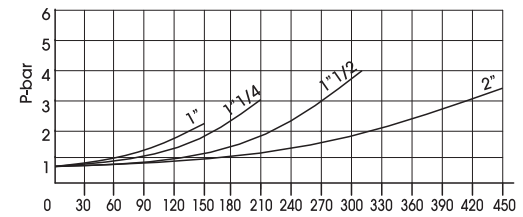
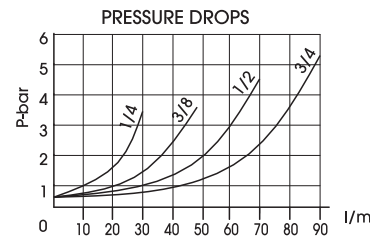
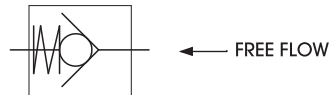
"The company reserves the right to operate dimensional changes without prior notice".



**VU ANSI/ASME
B1.20.1 NPT**
Standard

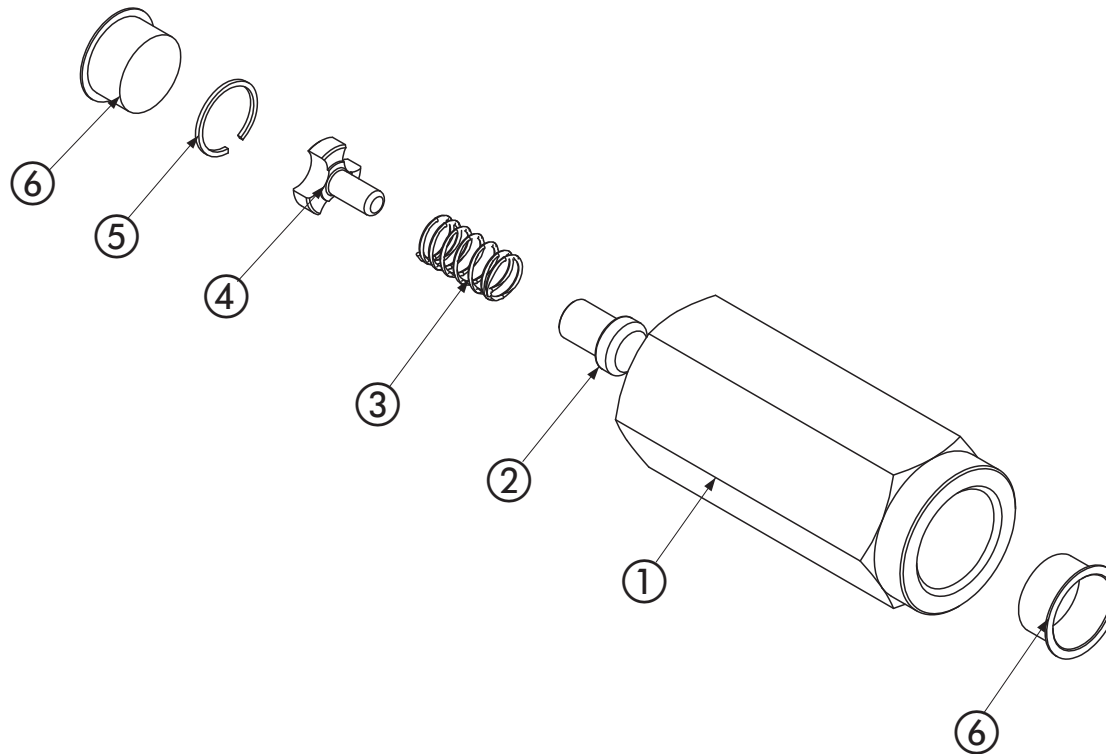
TYPE	PN	DN	MAX FLOW L/m	CV GPM	CRACKING PRESSURE	C	M	L	CH	Kg	ITEM CODE
VU N 1/4	50 MPa	6	30	8	0.4/0.7 BAR	55	N 1/4	15,5	22	0,1	GC2NNT150440000
VU N 3/8	50 MPa	10	48	15	0.4/0.7 BAR	68	N 3/8	15,5	27	0,18	GC2NNT250440000
VU N 1/2	50 MPa	13	70	20	0.4/0.7 BAR	75	N 1/2	17	32	0,31	GC2NNT350440000
VU N 3/4	40 MPa	20	95	25	0.4/0.7 BAR	85	N 3/4	21	36	0,45	GC2NNT440440000
VU N 1"	35 MPa	25	150	40	0.4/0.7 BAR	110	N 1"	24	46	0,95	GC2NNT530440000
VU N 1" 1/4	35 MPa	32	210	55	1 BAR	120	N 1" 1/4	24	55	1,49	GC2NNT630440000
VU N 1" 1/2	35 MPa	40	320	85	1 BAR	138	N 1" 1/2	24	65	2,4	GC2NNT730440000
VU N 2"	35 MPa	50	460	125	1 BAR	138	N 2"	27	75	3	GC2NNT830440000

HYDRAULIC DIAGRAM



"The company reserves the right to operate dimensional changes without prior notice".

VU 2-WAY HIGH PRESSURE BALL VALVES



Pos	Description	Material	Q.tà
1	Body	1,4404	1
2	Poppet	1,4404	1
3	Spring	1,4310	1
4	Spring ring	1,4404	1
5	Seeger	X 35 Cr Mo 17	1
6	Caps	PVC	2

On request

- Special Threads
- Pressure Class PN 500
- Spring closed: 1BAR - 3BAR - 5BAR - 8BAR

• For further special requests please consult our technical/commercial service

"The company reserves the right to operate dimensional changes without prior notice".