

50.295J

**Bindering i sort PVC skål.
Maks. belastning 250 kg.**

Lashing ring in plastic housing 97mm, Ø 100 mm. T: 12 mm. Load 250 kg.



50.039530V

Surringsøje, varmt galvaniseret med fjeder. Maks. belastning: 1.960 kg.

Lashing ring, hot zinc coated with spring 95 x 102 mm. Load 1.960 kg.



50.11226

Galvaniseret surringsskål. Halvrund. 80 x 70 cm.

Zinc-plated lashing ring.



50.70672

Rustfri surringsskål. 4 stk. Ø 5 mm huller. Tværpind: Ø 6 mm.

Lashing ring, stainless steel, with 4 Ø 5 mm. holes. Ø: 120 mm. T: 23 mm.



50.039530-1

Løs skål til surringssøje u. hul i siden.

Loose bowl for lashing ring without hole in side, zinc-plated.



50.9644

Bindering i galvaniseret skål. Med bagplade. Belastning: 2.000 kg.

Load ring in galvanized bowl with back plate. 150 x 114 mm. Load 2.000 kg.

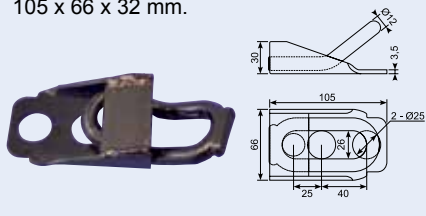


50.039070X

Surringsøje - sortlakeret.

Lashing eye, black enamelled.

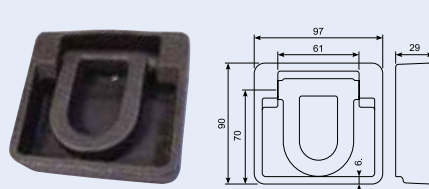
105 x 66 x 32 mm.



50.039060

Surringsøje, ubehandlet.

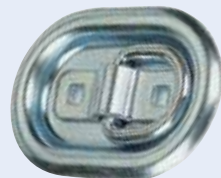
Lashing eye, raw. 97 x 90 x 30 mm.



50.296

Galvaniseret surring i skål. 145 x 100 mm. Centerhul 60 mm. Til nedfældning.

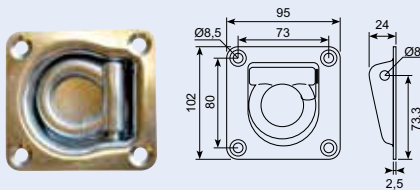
Zinc plated lashing ring.



50.13042

Galv. surringsskål med fjeder 102 x 95 mm med dræn hul i bunden.

Zinc plated lashing ring with spring 102 x 95 mm with drain hole in bottom.



50.DL8020-2

Rustfri surring i skål.

Stainless lashing ring.



50.297

Galvaniseret surring i skål. 104 x 70 mm. Centerhul 45 mm. Til nedfældning.

Zinc plated lashing ring.



50.12016

Smedet øje til surring. Udvendig 58.5 x 60.5 mm, Ø 9.9 mm. Plade 88,6 x 29,8 mm. Huller 11 mm.

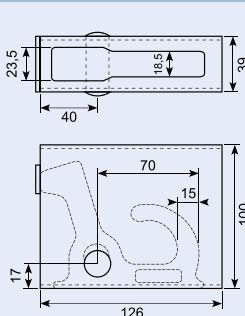
Forged eye for lashing.



50.DL8021-2

Indbygningskrog til påsvejsning.

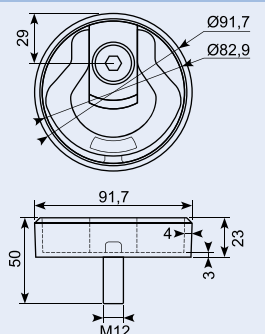
Concealed hook for welding.



50.DL8022-2

Surringsøje i aluminium til påsvejsning.

Lashing eye. Aluminium for welding.



50.295SS

Rustfri surringsskål. Ø 102 mm.
Brudstyrke 363 kg. Påbygning.



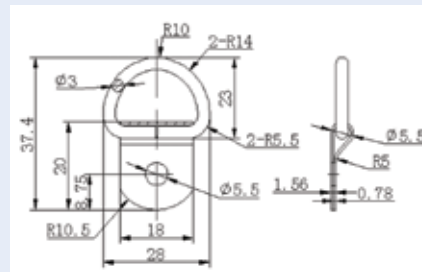
50.295ZP

Galvaniseret surringsskål. Ø 102 mm.
Brudstyrke 545 kg. Påbygning.



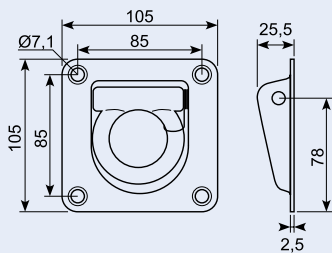
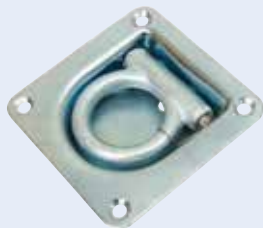
50.9820

D-Ring , stahl ST37 -1200N
Indv.22 mm t3.3 mm med plade
Nickel crome hel Ø5.3



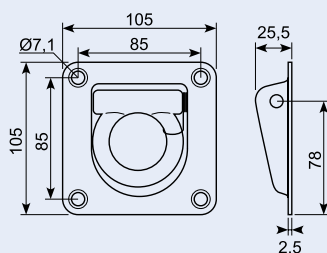
50.039521

Surringsøje, galvaniseret. Med fjeder, 105 x 105 mm. Belastning 2.000 kg. 10 mm ring.



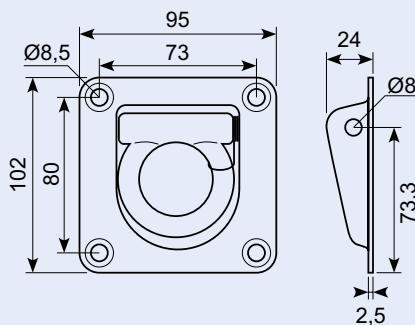
50.039521V

Surringsøje, varmtgalvaniseret. Med fjeder, 105 x 105 mm. Belastning 2.000 kg. 10 mm ring.



50.13042

Galv. surringsskål med fjeder. 102x95 mm med 8 mm dræn hul i bunden. Se også 50.13042V



50.13042V

Varmtgalv.surringskål med fje. 102x95mm 80 my+drænhul 800DaN load. Samt 2 ekstra Ø7.5 huller center 86 mm.

