

## Portsluser og tilbehør / Dock shelters

39.1501 \*



Front plate  
440 x 250 x 62 mm  
Weight: 16 kg  
For buffer [39.642X](#)

39.1502 \*



Front plate  
415 x 215 x 62 mm  
Weight: 14 kg  
For buffer [39.643X](#)

39.1503 \*



Back plate for welding  
450 x 250 x 15 mm  
Weight: 15 kg

39.1504 \*



Back plate galvanized  
450 x 250 x 15 mm  
Weight: 15 kg

39.1505 \*



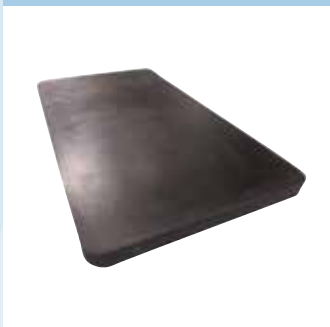
Packer  
450 x 250 x 10 mm  
Weight: 1,3 kg  
Rubber spacer

39.1506 \*



Packer  
450 x 250 x 15 mm  
Weight: 2,3 kg  
Rubber spacer  
Holes as an option

39.1507 \*



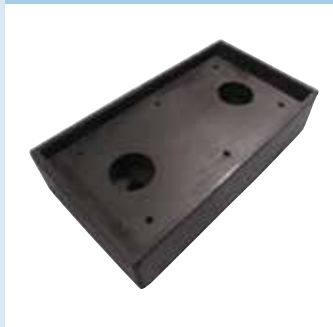
Packer  
450 x 250 x 20 mm  
Weight: 2,8 kg  
Rubber spacer  
Holes as an option

39.1508 \*



Packer  
450 x 250 x 50 mm  
Weight: 5,5 kg  
Rubber spacer

39.1509 \*



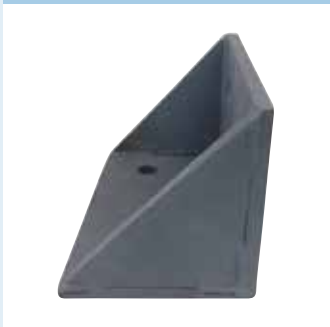
Dock bumper accessory  
450 x 250 x 100 mm  
Weight: 10 kg  
Buffer for PE plate

39.1510 \*



Front plate. Hardwearing PE  
410 x 210 x 35 mm  
Weight: 2,5 kg

39.1511 \*



Dock bumper accessory  
250 x 150 x 150 mm  
Weight: 8,1 kg  
For mount of buffer 150 mm over  
ramp level

39.1512 \*



Dock bumper accessory  
250 x 250 x 150 mm  
Weight: 12 kg  
For mount of buffer 150 mm over  
ramp level

39.1513 \*



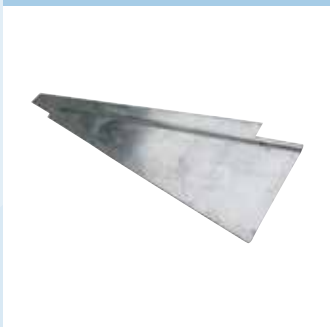
Front plate  
440 x 440 x 62 mm  
Weight: 13,5 kg

39.1514 \*



Packer  
450 x 450 x 15 mm  
Weight: 2,3 kg  
Rubber spacer for [39.651A](#)

39.1515 \*



Dock bumper accessory  
1.470 x 540 (max.) x 100 mm  
(min.)  
Weight: 12 kg  
Toe protection

\* Skaffevarer / Special order item

39.1616 \*



Packer  
750 x 250 x 15 mm  
Weight: 3,6 kg  
Rubber spacer

39.1617 \*



Packer  
750 x 250 x 20 mm  
Weight: 10,5 kg  
Rubber spacer

39.1618 \*



Packer  
750 x 250 x 50 mm  
Weight: 10,5 kg  
Rubber spacer

39.1819 \*



Front plate  
732 x 250 x 62 mm  
Weight: 26 kg  
For buffer [39.649](#)

39.1620 \*



Back plate for welding  
750 x 250 x 15 mm  
Weight: 24 kg

39.1621 \*



Back plate. Galvanized  
750 x 250 x 15 mm  
Weight: 24 kg

39.1622



Back plate for 450 mm buffer  
720 x 250 x 66 mm  
Weight: 32 kg  
Spring loaded. Follows the truck when loading.

39.1623 \*



Back plate for 750 mm buffer  
965 x 250 x 66 mm  
Weight: 47 kg  
Spring loaded. Follows the truck when loading.

39.1624 \*



Dock bumper accessory  
750 x 250 x 100 mm  
Weight: 17 kg  
Buffer for PE plate

39.1625 \*



Front plate. Hardwearing PE.  
710 x 210 x 35 mm  
Weight: 4,5 kg

39.654 \*



Dock bumper L  
750 x 400 x 100 mm  
Weight: 36 kg

39.655 \*



Dock bumper L  
750 x 400 x 100 mm  
Weight: 36 kg

39.1626 \*



Front plate. Galvanized  
750 x 400 x 100 mm  
Weight: 36 kg

39.1627 \*



Front plate. Galvanized  
750 x 400 x 100 mm  
Weight: 36 kg

39.1628 \*



Back plate. Galvanized  
750 x 400 x 100 mm  
Weight: 34 kg

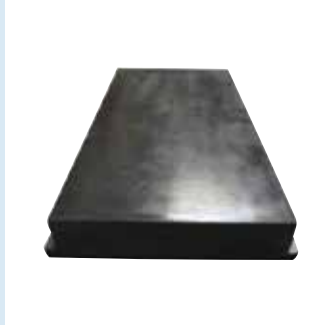
39.1629 \*



Back plate. Galvanized  
750 x 400 x 100 mm  
Weight: 34 kg

## Portsluser og tilbehør / Dock shelters

39.1630 \*



Front plate. Hardwearing rubber  
448 x 248 x 50 mm  
Weight: 7 kg

39.1631 \*



Front plate. Hardwearing PE  
450 x 250 x 50 mm  
Weight: 5 kg

39.1632 \*



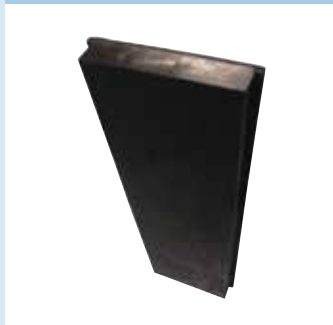
Back plate. Galvanized  
450 x 250 x 60 mm  
Weight: 11 kg  
Remember rubber spacer

39.1633 \*



Back plate. Galvanized  
470 x 270 x 120 mm  
Weight: 21 kg  
Remember rubber spacer

39.1634 \*



Front plate. Hardwearing rubber  
750 x 250 x 50 mm  
Weight: 12 kg  
Alternative to 39.1635

39.1635 \*



Front plate. Hardwearing PE  
750 x 250 x 50 mm  
Weight: 8 kg

39.1636 \*



Back plate. Galvanized  
770 x 270 x 80 mm  
Weight: 26 kg  
Remember rubber spacer

39.1637 \*



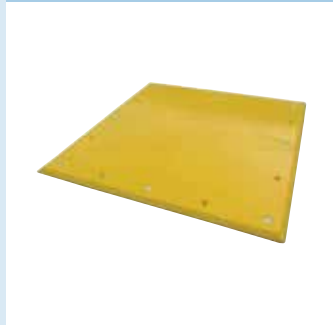
Back plate. Galvanized  
770 x 270 x 120 mm  
Weight: 34 kg  
Remember rubber spacer

39.1638 \*



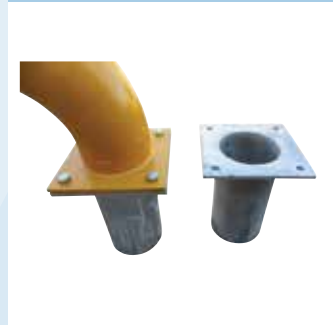
Trailer plate  
1.000 x 1.000 x 2,5 mm  
Weight: 26,5 kg  
To protect the concrete in front of  
loading ramp

39.1639 \*



Trailer plate PE  
1.000 x 1.000 x 20 mm  
Weight: 18,5 kg

39.1640 \*



Wheel guide  
Ø165 mm, 5 mm, 300 mm depth.  
Mounting plate: 250 x 250 x 10  
mm.  
Weight: 8,5 kg

39.1641 \*



Wheel guide  
Ø165 mm, 5 mm, 2.085 x 250 x  
365 mm.  
Color: Yellow RAL 1028  
Weight: 90 kg

39.1642 \*



Wheel guide  
Ø165 mm, 5 mm, 2.070 x 600 x  
365 mm. Yellow RAL 1028.  
Weight: 90 kg  
Can be ordered in hot-dipped.

39.1643 \*



Wheel guide  
2.070 x 250 x 200 mm  
Color: Yellow RAL 1028  
Weight: 78 kg

39.1644 \*



Wheel guide. Hot dipped.  
Ø165 mm, 5 mm, 3.000 x 600 x  
365 mm