

TRASTO

C o n v e r t i n g E q u i p m e n t



IL GUSTO
DI UN LAVORO
BEN
FATTO.

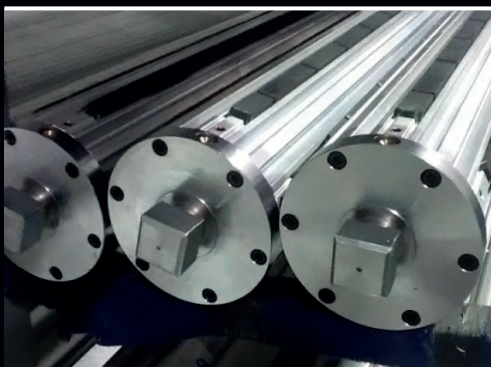
More than thirty years ago the decision to start building a **range of products to meet the needs of customers in the converting industry**.

This is how **TRASO** was born to become the reality of today, where the passion for work, the desire to always look ahead, commitment and availability of all, build an enterprise always racing, always expanding.

The new site of Robecco sul Naviglio, via Leopardi 12, gives the right space to the continuous desire to **innovate our products** and **security** (UNI EN ISO9001).

TRASO addresses to a national and international Clientele. We dedicate to our customers the human commercial and technological energy to **achieve the best solution**.





Expanding shafts

The range includes both shafts with keys and with lugs and they can be made of aluminium or steel, depending on the very accurate sizing that the technical office of Trasco performs before each sale.

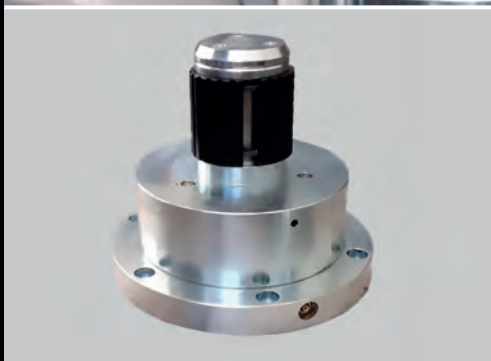


Rotating chucks

Trasco designs and manufactures a wide range of rotating chucks that are used to sustain the reels while unwrapping or wrapping.

They hold the protruding part of the expanding shaft and the journal, with which they match.

The chucks can be foot or flange mounted.



Expanding chucks

Pneumatic or pneumo-mechanical chucks applied in winding/unwinding reel; designed according to the customer's specific needs.

The body of the chuck can be made of steel or aluminium for special needs or lightness.



Rollers

Curved rollers or stretching roller are used in the paper industry, metal and plastic films and in the textile to stretch the tape evenly eliminating wrinkles.

During the cutting process they are used to avoid overlapping of rolls.



MORE RESISTANT THAN STEEL

The carbon fiber shaft by **TRASTO** is produced by pultrusion.

This system of production is used for large quantities and ensures extreme precision in size and in the percentages of materials used, this being a prerequisite for all composites.

TRASTO has also improved special equipment that guarantee excellent linearity to the pultruded profile, with a margin of error of 1 mm each 6 meters in length.

The profile is composed by high-strength fibers (920 GPa) arranged linearly on the external part and crossed in the internal section.

The amount of fibers used and their particular arrangement in the system give to the profile by **TRASTO** a deflection strength of 270 GPa, greater than that of steel (240 GPa).

It weighs 4.15 Kg/mt.

The expanding shaft in carbon fiber produced by **TRASTO is currently the only one with expanding lugs in the world.**





IL GUSTO
DI UN LAVORO
BEN
FATTO.





TRASCO s.r.l.
Converting Equipment

Sede Legale:
P.zza Volontari della Libertà, 8
21052 Busto Arsizio (VA)

Sede Operativa:
Via Leopardi, 12
20087 Robecco s/N. (MI)

Tel. +39 02.949.75.141
+39 02.947.14.99
Fax. +39 02.947.04.58

ammin@trascoworks.it
info@trascoworks.it
commerciale@trascoworks.it
tecnico@trascoworks.it
produzione@trascoworks.it



www.trascoworks.it

TRASCO