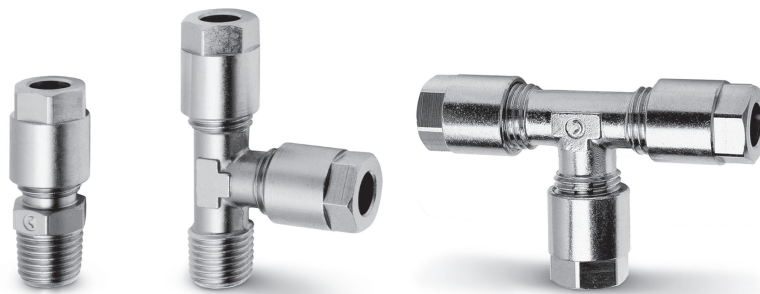


# Universal nose fittings Series 1000

Nose fittings for plastic, copper and brass tubes:  $\varnothing$  4, 6, 8, 10, 12 mm  
Fittings threads: BSP (G1/8, G1/4),  
BSPT (R1/8, R1/4, R3/8, R1/2)



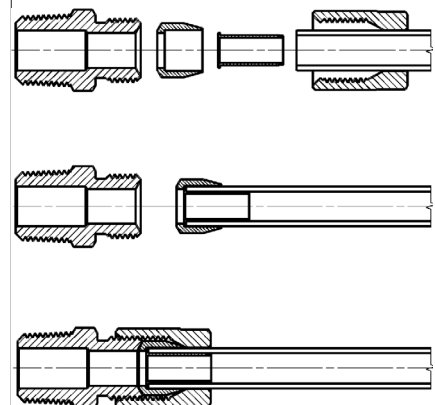
**Series 1000 nose fittings are used with plastic tubes as well as with copper, brass, steel and aluminium tubes. These fittings, which are suitable for several applications, can be used within pneumatic, oil-pressure and low-pressure hydraulic circuits.**

The fittings seats, noses and nuts comply with the DIN 3870-3861 standards.

## GENERAL DATA

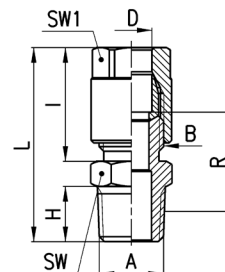
<b>Material</b>	nickel-plated brass
<b>Threads</b>	GAS, conical ISO 7 (BSPT) GAS, cylindrical ISO 228 (BSP)
<b>Pressure</b>	refer to operating pressure of tubes, max pressure 40 bar
<b>Connecting tube</b>	annealed copper and plastic tubes (with reinforcement)
<b>Diameters</b>	4 - 6 - 8 - 10 - 12 mm
<b>Fluid</b>	compressed air and other low pressure fluids
<b>Temperature</b>	see data for tubing used

## Fittings with connecting tube



**Fittings Mod. 1050**

BSPT Male Connector

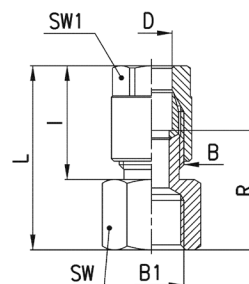

**DIMENSIONS**

Mod.	D	A	B	H	I	L	R	SW	SW1	Weight (g)
1050 4-1/8	4	R1/8	1/8	7,5	19	31	14	12	12	19
1050 6-1/8	6	R1/8	1/8	7,5	19	31	14	12	12	18
1050 6-1/4	6	R1/4	1/8	11	19	35	16,5	14	12	23
1050 8-1/8	8	R1/8	1/4	7,5	23	35	15,5	14	14	29
1050 8-1/4	8	R1/4	1/4	11	23	39	18	14	14	33
1050 8-3/8	8	R3/8	1/4	11,5	23	39,5	18	17	14	40
1050 10-1/4	10	R1/4	3/8	11	25,5	41,5	18	17	17	51
1050 10-3/8	10	R3/8	3/8	11,5	25,5	42	18	17	17	55
1050 10-1/2	10	R1/2	3/8	14	25,5	45	18	22	17	65
1050 12-1/4	12	R1/4	M18x1,5	11	24,5	40,5	12	19	19	56 *
1050 12-3/8	12	R3/8	M18x1,5	11,5	24,5	41	12	19	19	58 *
1050 12-1/2	12	R1/2	M18x1,5	14	24,5	44	12	22	19	68 *

\* = with bi-conical olive

**Fittings Mod. 1063**

BSP Female Connector

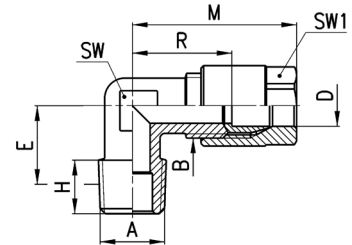

**DIMENSIONS**

Mod.	D	B1	B	I	L	R	SW	SW1	Weight (g)
1063 4-1/8	4	G1/8	1/8	19	29	18,5	13	12	19
1063 6-1/8	6	G1/8	1/8	19	29	18,5	13	12	18
1063 6-1/4	6	G1/4	1/8	19	30,5	20	17	12	25
1063 8-1/8	8	G1/8	1/4	23	33	20	14	14	31
1063 8-1/4	8	G1/4	1/4	23	34,5	21,5	17	14	35

4/3.05.02

Fittings Mod. 1020

BSPT Fix Male Elbow

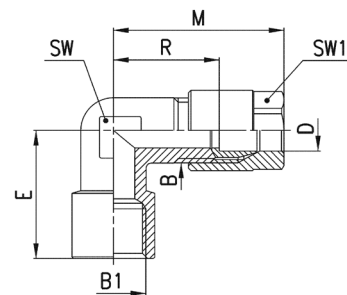


DIMENSIONS										
Mod.	D	A	B	E	H	M	R	SW	SW1	Weight (g)
1020 4-1/8	4	R1/8	1/8	11,5	7,5	29,5	19	9	12	21
1020 6-1/8	6	R1/8	1/8	11,5	7,5	29,5	19	9	12	19
1020 6-1/4	6	R1/4	1/8	13,5	11	29,5	19	12	12	27
1020 8-1/8	8	R1/8	1/4	11,5	7,5	33	20	11	14	35
1020 8-1/4	8	R1/4	1/4	13,5	11	33	20	12	14	36
1020 8-3/8	8	R3/8	1/4	15,5	11,5	35	22	14	14	50
1020 10-1/4	10	R1/4	3/8	15	11	38	22,5	13	17	59
1020 10-3/8	10	R3/8	3/8	15,5	11,5	38	22,5	14	17	58
1020 10-1/2	10	R1/2	3/8	16	14	38	22,5	16	17	78
1020 12-1/4	12	R1/4	M18x1,5	15	11	37	16,5	15	19	66 *
1020 12-3/8	12	R3/8	M18x1,5	15	11,5	37	16,5	15	19	66 *
1020 12-1/2	12	R1/2	M18x1,5	16	14	37	16,5	16	19	75 *

\* = with bi-conical olive

Fittings Mod. 1093

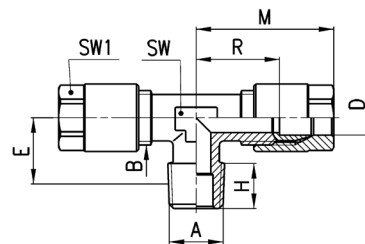
BSP Female Elbow



DIMENSIONS									
Mod.	D	B1	B	E	M	R	SW	SW1	Weight (g)
1093 4-1/8	4	G1/8	1/8	19	29,5	18,5	12	12	31
1093 6-1/8	6	G1/8	1/8	19	29,5	19	12	12	25
1093 6-1/4	6	G1/4	1/8	23	30,5	20	13	12	39
1093 8-1/8	8	G1/8	1/4	19	33	20	11	14	39
1093 8-1/4	8	G1/4	1/4	23	35	22	13	14	44

**Fittings Mod. 1000**

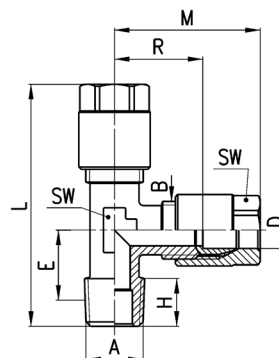
BSPT Fix Male Tee


**DIMENSIONS**

Mod.	D	A	B	E	H	M	R	SW	SW1	Weight (g)
<b>1000 4-1/8</b>	4	R1/8	1/8	11,5	7,5	29,5	19	9	12	35
<b>1000 6-1/8</b>	6	R1/8	1/8	11,5	7,5	29,5	19	9	12	33
<b>1000 8-1/4</b>	8	R1/4	1/4	13,5	11	33	20	12	14	63
<b>1000 10-1/4</b>	10	R1/4	3/8	15	11	38	22,5	13	17	104

**Fittings Mod. 1010**

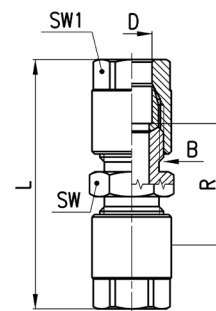
Lateral BSPT Fix Male Tee


**DIMENSIONS**

Mod.	D	A	B	E	H	L	M	R	SW	SW1	Weight (g)
<b>1010 4-1/8</b>	4	R1/8	1/8	11,5	7,5	48	29,5	19	9	12	37
<b>1010 6-1/8</b>	6	R1/8	1/8	11,5	7,5	48	29,5	19	9	12	33
<b>1010 8-1/4</b>	8	R1/4	1/4	13,5	11	54,5	33	20	12	14	61
<b>1010 10-1/4</b>	10	R1/4	3/8	15	11	61,5	38	22,5	13	17	103

**Fittings Mod. 1230**

Union Connector

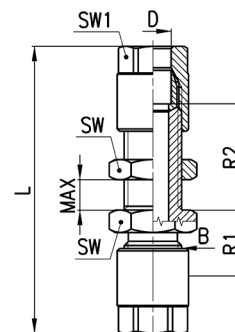

**DIMENSIONS**

Mod.	D	B	L	R	SW	SW1	Weight (g)
<b>1230 4</b>	4	1/8	42,5	21,5	12	12	29
<b>1230 6</b>	6	1/8	42,5	21,5	12	12	26
<b>1230 8</b>	8	1/4	51	25	14	14	48
<b>1230 10</b>	10	3/8	56	25	17	17	83
<b>1230 12</b>	12	M18x1,5	54	13	19	19	140 *

\* = with bi-conical olive

**Fittings Mod. 1250**

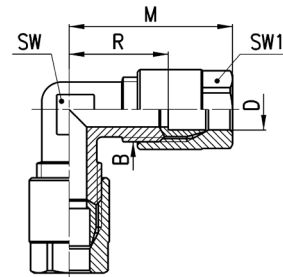
Bulkhead Connector


**DIMENSIONS**

Mod.	D	B	L	R1	R2	MAX	SW	SW1	Weight (g)
<b>1250 4</b>	4	1/8	57,5	12,5	23	12	14	12	40
<b>1250 6</b>	6	1/8	57,5	13	23,5	12	14	12	38
<b>1250 8</b>	8	1/4	65	15	24	13	17	14	67
<b>1250 10</b>	10	3/8	72,5	15	26,5	13	22	17	119

Fittings Mod. 1220

Elbow Connector

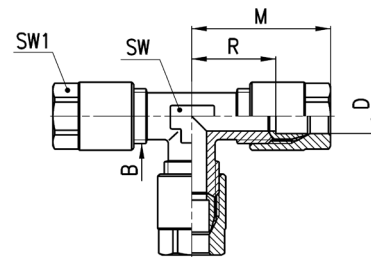


DIMENSIONS							
Mod.	D	B	M	R	SW	SW1	Weight (g)
1220 4	4	1/8	29,5	19	9	12	31
1220 6	6	1/8	29,5	19	9	12	29
1220 8	8	1/4	33	20	11	14	53
1220 10	10	3/8	38	22,5	14	17	92
1220 12	12	M18x1,5	37	16,5	16	19	99 *

\* = with bi-conical olive

Fittings Mod. 1210

Tee Connector

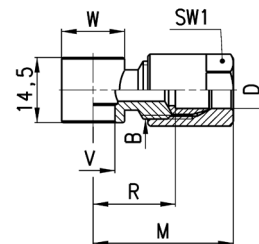


DIMENSIONS							
Mod.	D	B	M	R	SW	SW1	Weight (g)
1210 4	4	1/8	29,5	19	9	12	45
1210 6	6	1/8	29,5	19	9	12	42
1210 8	8	1/4	33	20	12	14	79
1210 10	10	3/8	38	22,5	13	17	133
1210 12	12	M18x1,5	37	16,5	16	19	144 *

\* = with bi-conical olive

Fittings Mod. 1170 assembled with Mod. 1631

Single Banjo

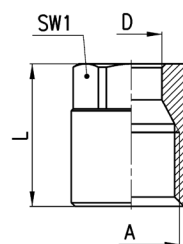


DIMENSIONS								
Mod.	D	B	R	M	V	W	SW1	Weight (g)
1170 6-1/8	6	1/8	17,5	28	9,8	∅ 14	12	20
1170 6-1/4	6	1/8	20	30,5	13,2	∅ 18	12	24
1170 8-1/8	8	1/4	18	31	9,8	∅ 14	14	31 *

\* = assembled with Mod. 1635

**Accessories Mod. 1303**

Blocking nut


**DIMENSIONS**

Mod.	D	A	L	SW1	Weight (g)
<b>1303 4-1/8</b>	4	1/8	15,5	12	8
<b>1303 6-1/8</b>	6	1/8	15,5	12	8
<b>1303 8-1/4</b>	8	1/4	19	14	14
<b>1303 10-3/8</b>	10	3/8	21,5	17	24
<b>1303 12-M18x1,5</b>	12	M18x1,5	19,5	19	27

**Accessories Mod. 1310**

Olive and Bicone

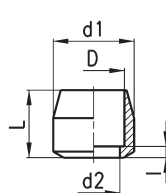


FIG. 1

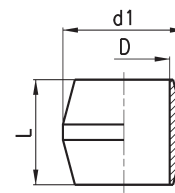


FIG. 2

**DIMENSIONS**

Mod.	D	d1	d2	l	L	Weight (g)
<b>1310 4</b>	4	7,8	3	1	8	2
<b>1310 6</b>	6	7,8	4,5	1	7	1
<b>1310 8</b>	8	10,8	7	1,5	9	3
<b>1310 10</b>	10	13,8	9	1,5	11,5	5
<b>1310 12-M18</b>	12	16,3	12	-	11	6 *

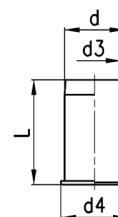
Fig. 1 = olive

Fig. 2 = bi-conical olive

\* = with bi-conical olive

**Accessories Mod. 1320**

Inserts


**DIMENSIONS**

Mod.	d	d3	d4	L	Weight (g)
<b>1320 4</b>	4	3	5	12	1
<b>1320 6</b>	6	5	7	13	1
<b>1320 8</b>	8	7	9	14	1
<b>1320 10</b>	10	9	11	16	2