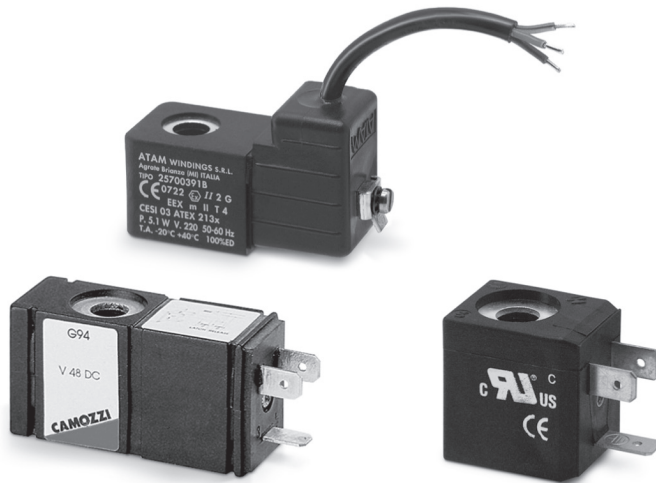


Solenoids U7* - U7*EX - G7* - A8* G93 - B* - H8* and GP*

New 

Version A and B

Connection according to DIN 43650 and DIN 40050 standards



The mechanical part of the tube in the solenoid valves Series A, 3, 4, 9 and NA allows the mounting of various types of solenoids.

Mod. G9...: special solenoids with incorporated memory for pulsed operation.

Mod. H8...: explosion-proof solenoids suitable for potentially explosive ambients (ATEX).

Mod. U7...: solenoids available also with ATEX certification.

Mod. B...: to be used only with solenoid valves Series CFB (2/1.30).

Mod. GP...: in compliance with DIN EN 175301-803-C standards, they can be mounted only on Series AP proportional valves, size 16 mm.

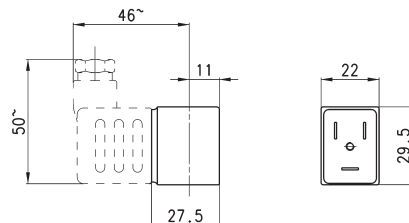
GENERAL DATA

Wire insulation	U7... / G7... / G93 = class F (155° C) A8... = class H (180° C) B... / H8... = class H (200° C)
Protection class	U7... / G7... / G93 = IP54 - DIN 40050 IP65 (with connector Mod. 122-800 and Mod. 122-800EX) A8... / B... = IP54 - DIN 40050 IP65 (with connector Mod. 124-800) H8... = IP64
Operation	ED 100%
Tolerance V AC	Mod. A and U: -15% / +10% Mod. B: ±10%
Tolerance V DC	Mod. A and U: ±10% Mod. B: ±5%

Solenoids Mod. U7... / U7*EX and Mod. G7...


Connections: Bipolar plus earth DIN 43650 (vers. B)
 Mod. U7*EX marked II 3 GD Eex nA T4
 Solenoid material:
 U7* = PET - G7* = PA

Note: to order the ATEX version it is necessary to add EX at the end of the code.



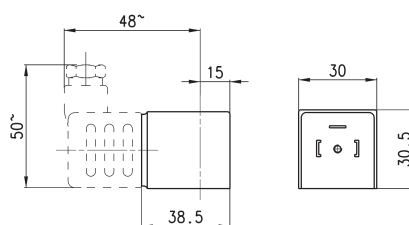
Mod.	Sol. volt. (1)	Pow. abs. (1)	Sol. volt. (2)	Pow. abs. (2)	Sol. volt. (3)	Pow. abs. (3)
U7H	12V DC	3.1W	24V - 50/6 Hz	3.5VA		
G7H	12V DC	3.1W	24V - 50/60Hz	3.5VA		
U7K	110V - 50/60Hz	3.8VA	125V - 50/60Hz	5.5VA	72V DC	4.8 W
U7K1	110V - 50/60Hz	3.8VA	125V - 50/60Hz	5.5VA	72V DC	4.8 W
G7K	110V - 50/60Hz	3.8VA	125V - 50/60Hz	5.5VA	72V DC	4.8 W
G7K1	110V - 50/60Hz	3.8VA	125V - 50/60Hz	5.5VA	72V DC	4.8 W
U7J	230V - 50/60Hz	3.5VA	240V - 50/60Hz	4VA		
G7J	230V - 50/60Hz	3.5VA	240V - 50/60Hz	4VA		
U79	48V DC	3.1W				
G79	48V DC	3.1W				
U710	110V DC	3.2W				
G710	110V DC	3.2W				
U77	24V DC	3.1W	48V - 50/60Hz	3.5VA		
U771	24V DC	3.1W	48V - 50/60Hz	3.5VA		
G77	24V DC	3.1W	48V - 50/60Hz	3.5VA		
G771	24V DC	3.1W	48V - 50/60Hz	3.5VA		
U7F	380V - 50/60Hz	7VA				
U72	12V DC	5W				
G72	12V DC	5W				
U73	24V DC	5W				
G73	24V DC	5W				

Notes to the table:
 Sol. volt. = Solenoid voltage
 Pow. abs. = Power absorption

Mod. U7K1, G7K1, U771 and G771 are to be used only with sol. valves series A, NO in line.

Solenoids Mod. A8...

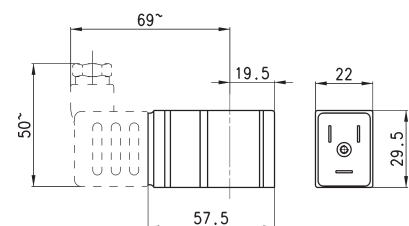

Connections: Bipolar plus earth DIN 43650 (version A)



Mod.	Solenoid voltage	Power absorption
A8B	24V - 50/60Hz	5VA
A8D	110V - 50/60Hz	5VA
A8E	220V - 50/60Hz	5VA
A83	24V DC	4W

Solenoids Mod. G93 (with memory)

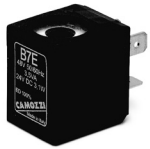

Voltage tolerance: DC and AC $\pm 10\%$
 Pulsed operation: see explanation



Mod.	Voltage	Minimum impulse latch/release	Consumption latch/release
G93	24 V DC	18 ms - 10 ms	168 mA - 80 mA

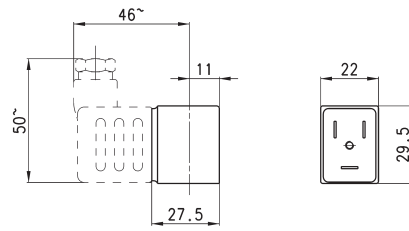
Solenoids Mod. B7...

New



Connections: Bipolar plus earth DIN 43650 (vers. B)

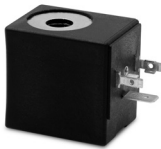
Solenoid material: PA-MXD6



Mod.	Solenoid voltage	Power absorption
B7B	24 V - 50/60 Hz	9 VA
B7D	110 V - 50/60 Hz	9 VA
B7E	230 V - 50/60 Hz	9 VA
B72	12 V - DC	10 W
B73	24 V - DC	10 W

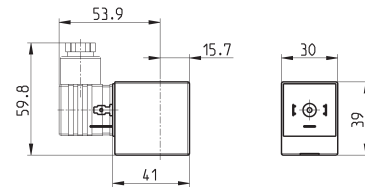
Solenoids Mod. B8*K

New



Connections: Bipolar plus earth DIN 43650 (vers. A)

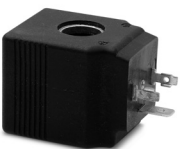
The B8*K models can be used only with some solenoid valves Series CFB (Mod. CFB-D1..., 2/2 NO). For further information see the table on page 2/1.30.03.



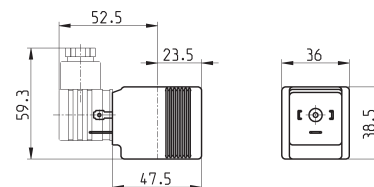
Mod.	Solenoid voltage	Power absorption
B8B/B8BK	24 V - 50 Hz	15 VA
B8D/B8DK	110 V - 50/60 Hz	15 VA
B8E/B8EK	230 V - 50/60 Hz	15 VA
B82/B82K	12 V - DC	19 W 19 W
B83/B83K	24 V - DC	19 W

Solenoids Mod. B9...

New



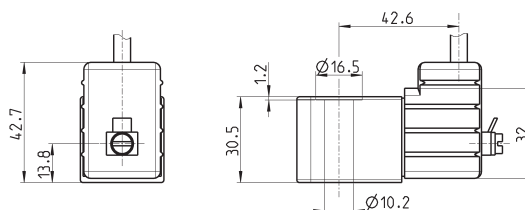
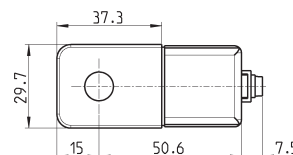
Connections: Bipolar plus earth DIN 43650 (vers. A)



Mod.	Solenoid voltage	Power absorption
B9B	24 V - 50 Hz	29 VA
B9D	110 V - 50/60 Hz	29 VA
B9E	230 V - 50 Hz	29 VA
B92	12 V - DC	30 W
B93	24 V - DC	30 W

Solenoid Mod. H8.. for potentially explosive ambients (ATEX)


Class F according to the standard VDE0580
 Operating temperature: -20°C + 40°C
 Connections: tripolar cable 3 mt (standard)
 Conformity certificate to the standard CEI 31-8 (EN 50014) and CEI 31-13 (EN50028) marked EEx m IIT4.
 Incapsulating: self-extinguishing PA.

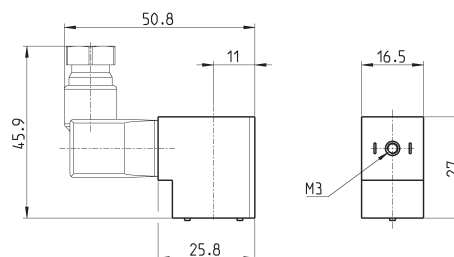


Mod.	Solenoid voltage	Power absorption
H83	24 V - DC	5,4 W
H8B	24 V - 50/60 Hz	5,3 VA
H8C	48 V - 50/60 Hz	5,3 VA
H8D	110 V - 50/60 Hz	5,3 VA
H8E	230 V - 50/60 Hz	5,3 VA

For Series NA use plate mod. NA54-PC.

Solenoids Mod. GP - size 16 mm


Electrical connection: Bipolar
 (DIN EN 175301-803-C)
 Solenoid material: PA

New


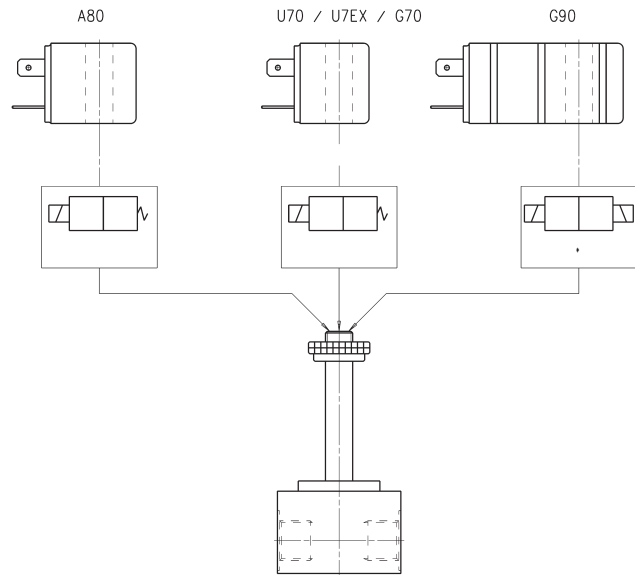
Mod.	Solenoid voltage	Power absorption
GP7	12 V DC	3 W
GP7	24 V DC	3 W

Solenoids for solenoid valves Series A, 3, 4, 9 and NA

All solenoids presented can be mounted on the following solenoid valves: Series A - 3 - 4 - 9 - NA

NB:

For the tightening of the solenoids' nut we recommend to do it manually, avoiding the use of any equipment.



Solenoids Mod. G9...

Solenoids Mod. G9... can be replaced on all other Series A solenoid valves or pilots allowing to change the valve functioning from:

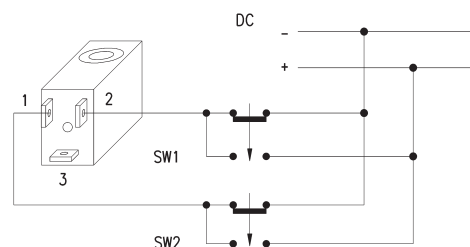
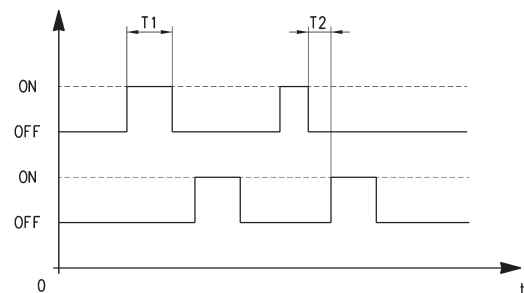
- unstable functioning system (spring return)
- stable functioning system (memory)

The stable functioning has the following advantages:

- with an impulse of about 20 ms after which the valve always remains in the controlled position.
- the valve remains in the controlled position (opened or closed) even if there is no power.
- when normally opened valves should be used, it is not necessary to use valves with special mechanical parts as a NC valve becomes a NO valve just by changing the control impulse sequence.
- The impulse control system facilitates the utilization with electronic circuits. The minimum required impulse for the function is 20 ms; if, for circuit reasons, the impulse last for a longer period, there is no danger of heating.
- magnet attraction command = Actuation SW1
- magnet release command = Actuation SW2

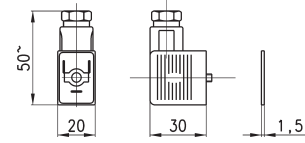
If the solenoids are mounted in batteries, a magnetic scheme type G90/L should be used.

To facilitate the cabling a special connector is available, which contains a circuit which realises the inversion of the power supply to the solenoid, indispensable for the PLC command, 122-892 P with common positive or 122-893 N with common negative.

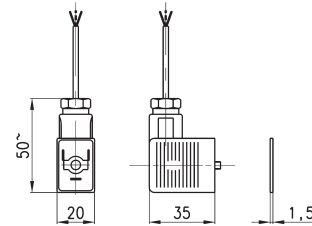



Connectors for solenoids Mod. U7... / U7*EX - G7... and B7...

According to DIN 43650 (PG) standard

 Mod. 122-800EX:
for ATEX certified solenoids mod. U7*EX, with anti-screwing off screw mod. TORX.


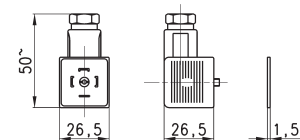
Mod.	Torque (Nm)
122-800	0.5
122-800EX	0.5


Connectors for solenoids Mod. G9


Mod.	Connection	Torque (Nm)
122-892C	P common positive	0.5
122-893C	N common negative	0.5


Connectors for solenoids Mod. A8 and Mod. B8... / B9...

According to DIN 43650 (PG) standard



Mod.	Torque (Nm)
124-800	0.5