

SENTIR

edge

**The new Plug´N´Sense System
- Safety can be so easy! -**

Partner in Performance

- 1. Main facts**
- 2. Description**
- 3. Assembly instructions**
- 4. Mounting instructions**
- 5. Price sheets**
- 6. Helpful info**
- 7. Contact information**

Hard facts:

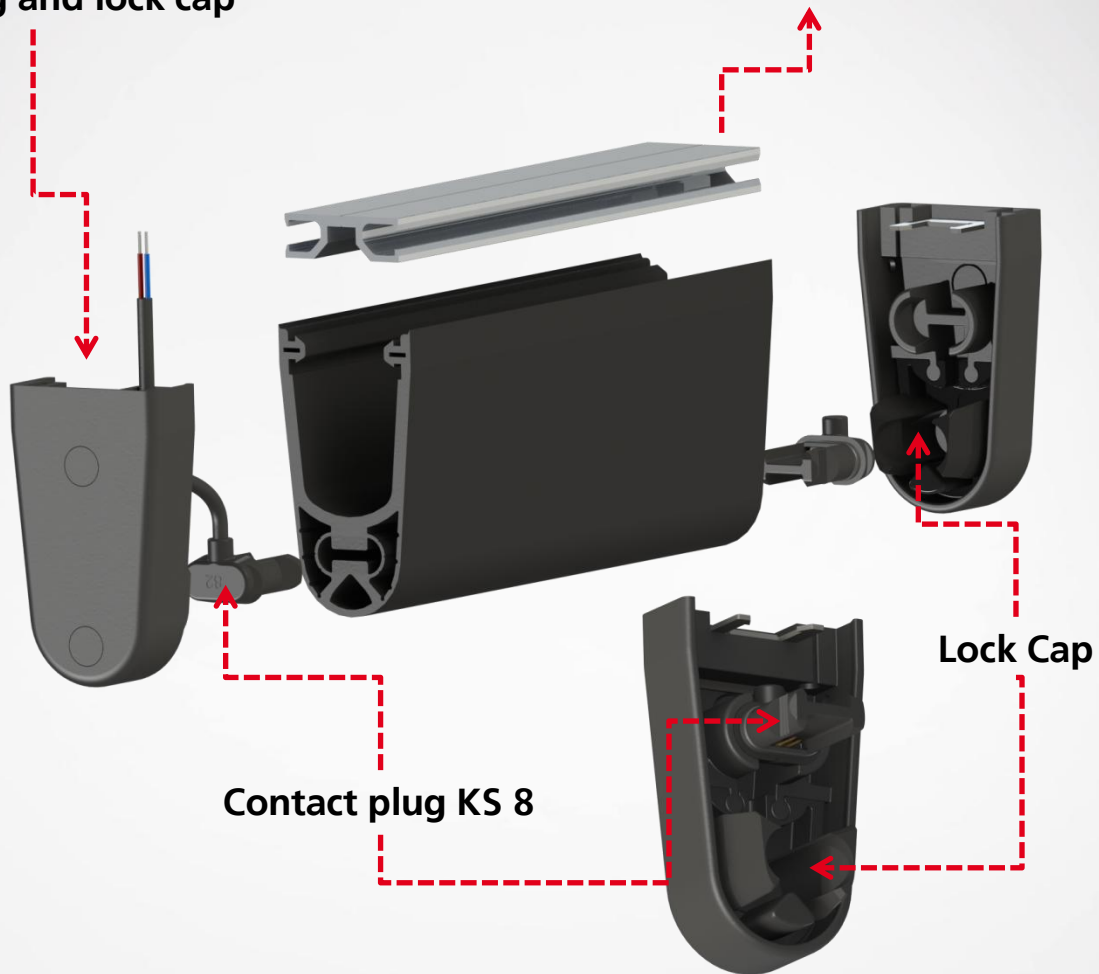
- **Fast and easy assembling**
- **Compact design of the components**
- **Permanent elastic sealing of the switching chamber (IP 65)**
- **No further glue sets necessary**
- **Firm joint of the components**
- **Increase of flexibility in service**
- **UL 325 recognized**

Soft facts:

- **Time-saving**
- **Simple handling**
- **Weatherproof and moisture resistant**
- **No additional tools needed for assembly**
- **Usable for all common profiles of the GE F and GF series**
- **Short response travel**
- **Assembling at the construction site possible**

Pre-assembled endcap with contact plug and lock cap

Aluminium Mount Profile



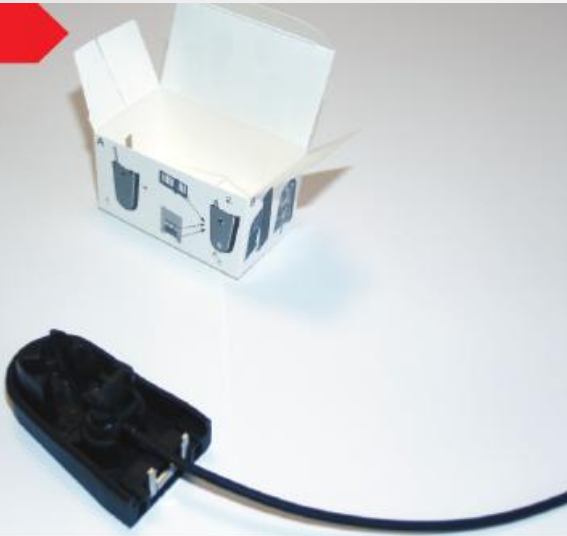
Contact plug KS 8

Lock Cap

Nothing compares to this compact design!

Partner in Performance

STEP 1



Components

STEP 2



Self sealing contact plug

STEP 3



Snap on end cap

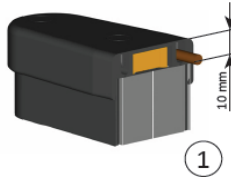
STEP 4



Assembled IP65 safety edge

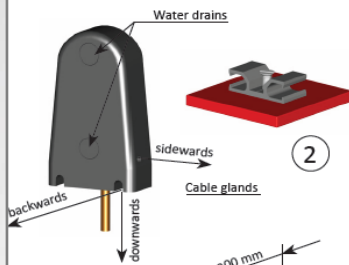
Partner in Performance

Safety-contact-edges may only be assembled and installed by authorized personnel!



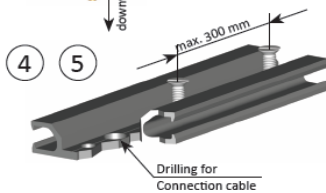
1. Cutting Mounting Rail:

Cut the mounting rail cut 10 mm shorter than the overall length of the safety-contact-edge to allow for the overlap of the end caps.



2. Water Drains on End Caps

Each end cap has a water drain. If the edge is mounted horizontally, remove water drain in both end caps. If safety-contact-edge is mounted vertically, only open the drain on the lower end cap. Make notch for cable.



3. Installing Mounting Rail

For proper operation of safety-contact-edge, the mounting rail needs to be mounted on a smooth, flat surface.

4. Drilling holes

Mounting rails need to be attached using 4 mm screws. Drill proper size clearance holes. Space screws out evenly over length of mounting rail. Do not exceed 300 mm apart.



5. Connection Cable

If cable will run through the mounting rail, drill a 7 mm clearance hole for the connection cable. If cable has an M8 connector on it, drill a 10 mm hole. Remove burrs from hole to prevent damage to cable. Insert the connection cable through the drilled hole.

6. End Cap

Lift off the bottom of the end cap slightly to ease the mounting of the safety-contact-edge onto the mounting rail.



7. Installing Contact Edge

Spray soapy water solution onto the base of the safety-contact-edge and the mounting rail to ease the installation onto the mounting rail. **Do Not** use talcum, oil and other lubricants when installing safety-contact-edge onto the mounting rail.



8. Contact Edge Side Tabs

Press the safety-contact-edge side tabs into the mounting rail. Do one side at a time. Do not pull or push the safety-contact-edge into the mounting rail as this may damage the safety-contact-edge.



9. Press On End Caps

Press on the end cap and make sure the clip is in the correct position.

To ensure the proper operation of the safety-contact-edge these installation instructions must be followed.

When mounting safety-contact-edge onto a sectional door, use stoppers to prevent over travel of door, see data sheet for proper door stopper.

ASO GmbH excludes all liability for damage caused as a result of an incorrect assembly and installation of the contact edges.

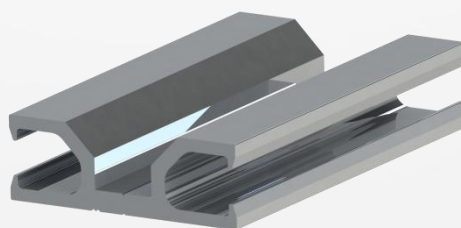
KS 8 W – GE F45-Set or KS 8 L XX.Xm - GE F45-Set is suitable for:



GE F45 SK
Article No. 1509-0420



GE F45 SKLi
Article No. 101 287

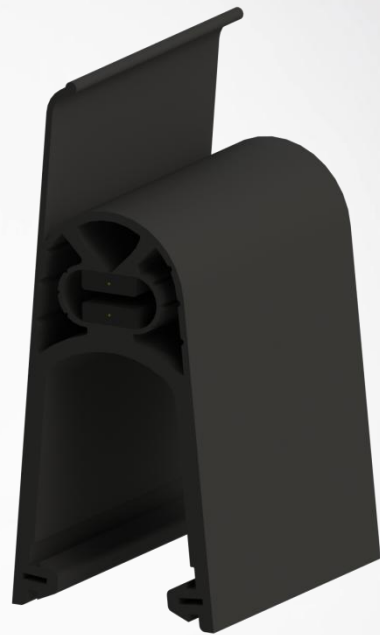


AL 30-10
Article No. 103 217

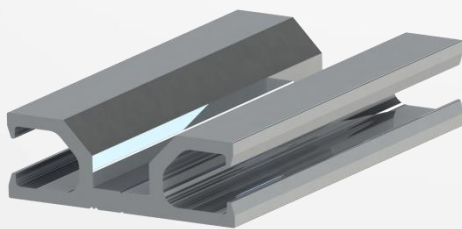
KS 8 W – GE F65-Set or KS 8 L XX.Xm - GE F65-Set is suitable for:



GE F65 SK
Article No. 1509-0100



GE F65 SKLi
Article No. 101 297



AL 30-10
Article No. 103 217



AL 40-10
Article No. 103 214

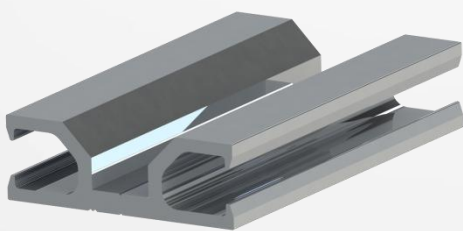
KS 8 W – GE F85-Set or KS 8 L XX.Xm - GE F85-Set is suitable for:



GE F85 SK
Article No. 1509-0470



GE F85 SKLi
Article No. 101 299



AL 30-10
Article No. 103 217



AL 40-10
Article No. 103 214

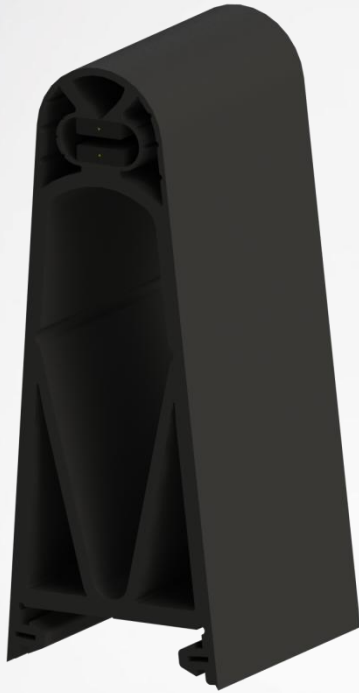


For GE F115



Description
KS 8 o – GE F115-Set KS8 o termination plug incl. Lock cap and EK115P End cap Article-No: 1808-0670
KS 8 W – GE F115-Set resistor plug incl. Lock cap and EK115P End cap Article-No: 1808-0170
Contact plug with cable
KS 8 L0,5m – GE F115-Set incl. Lock cap and EK115P End cap Article-No: 1808-0250
KS 8 L1,0m – GE F115-Set incl. Lock cap and EK115P End cap Article-No: 1808-0290
KS 8 L2,5m – GE F115-Set incl. Lock cap and EK115P End cap Article-No: 1808-0330

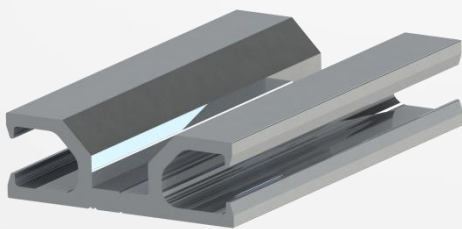
KS 8 W – GE F115-Set or KS 8 L XX.Xm - GE F115-Set is suitable for:



GE F115 SK
Article No. 1509-0470



GE F115 SKLi
Article No. 101 299



AL 30-10
Article No. 103 217



AL 40-10
Article No. 103 214

**Visit our website and get
further information:**

www.asosafety.com

Product area of the GE F Profiles

For further information just call us: +1 973 586-9600

Or send an email to Sales-us@asosafety.com!

Hauptsitz Europa Headquarter Europe

ASO GmbH
Am Grarock 8
33154 Salzkotten

Tel +49 5258 9327-0
Fax +49 5258 9327-99
www.asosafety.de
info@asosafety.com

Hauptsitz USA Headquarter USA

ASO Safety Solutions Inc.
Roundhill Drive, Unit 4
Rockaway, NJ 07866

Phone +1 973 586-9600
Fax +1 973 586-1590
www.asosafety.com
Sales-us@asosafety.com

ASO Frankreich ASO France

VRD ASO France
67 Avenue de Verdun Lot 43
77470 Trilport

Phone +33 1 60227244
Fax +33 1 60422350
www.asosafety.fr
france@asosafety.com

ASO Großbritannien ASO United Kingdom

Unit 16, James Scott Road
Halesowen, West Midlands
B63 2QT

Phone +44 1384 413366
Fax +49 5258 9327-99
www.asosafety.co.uk
england@asosafety.com

ASO-Ansprechpartner

ASO-Contacts

Vertrieb Deutschland Distribution Germany

Tel +49 5258 9327-0
Fax +49 5258 9327-99
www.asosafety.de
info@asosafety.com

Vertrieb GB/Ireland/BeNeLux Distribution BeNeLux

Andreas Holz
Tel +49 5258 9327-26
Fax +49 5258 9327-99
www.asosafety.de
info@asosafety.com

Vertrieb Frankreich Distribution France

Pascal Stoop
Tel + 33 1 60227244
Fax + 33 1 60422350
www.asosafety.fr
france@asosafety.com

Vertrieb USA Distribution USA

Thomas Polistina.
Phone +1 973 586-9600
Fax +1 973 586-1590
www.asosafety.com
Sales-us@asosafety.com