

# New

## Guide column with integrated gas spring



### Variable, multi-purpose!

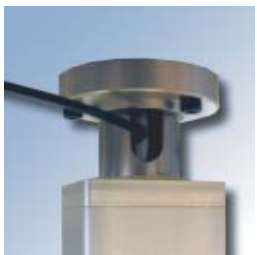
Thanks to our modular system, the Bansbach guided columns are variable in length and can be used in various applications. They are supplied according to your specifications along with a customized, pre-installed gas spring that suits your specific needs minimizing assembly time and costs.



Bowden wire  
release system  
top



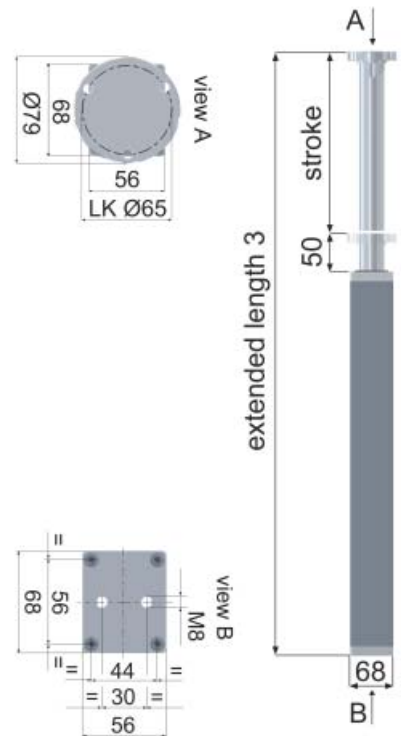
Lever  
release system  
bottom



Hydraulic-  
release system  
top

#### Product details:

- Pre-assemble Column and Gas spring
- Simple installation
- stroke length from 100 to 500 mm
- extension force 40N - 700N
- locking force in pull direction: 2,5 x F1
- locking force in push direction: 9 x F1
- progressivity ca 35%
- secured against rotation
- Release system: hydraulic (top), bowden wire (top) or lever (bottom) possible (see gas spring catalogue page 20)



Order number

guide column	release system	stroke	min. extended length (EL3)	force	model	Index
FSE	H	300	794	250	T	001
	H=hydraulic B=bowden wire L=lever	100 - 500	EL3 = stroke x 2,13 + 155	40N - 700 N	T	only for repeating orders

The flyer is subject to technical alterations and printing mistakes.

**Bansbach easylift GmbH**  
Barbarossastraße 8  
D-73547 Lorch

Tel. +49 (0) 7172/9107-0  
Fax +49 (0) 7172/9107-44

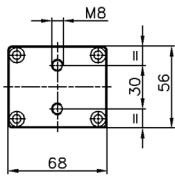
info@bansbach.de  
www.bansbach.de

**Bansbach**  
easylift

# Guide column with intergrated gas spring

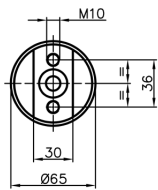
## Variable, multi-purpose!

Thanks to our modular system, the Bansbach guided columns are variable in length and can be used in various applications. They are supplied according to your specifications along with a customized, pre-installed gas spring that suits your specific needs minimizing assembly time and costs.



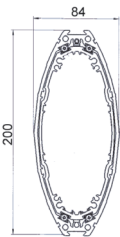
Order number

FSE	H	300	794	250	T	001
guide column	release system	stroke	min. extended length (EL3)	force	model	Index
	H=hydraulic B=bowden wire L=lever	100 - 500	EL3 = stroke x 2,13 + 155	40N - 700 N	T	only for repeating orders



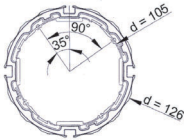
Order number

FSR	L	400	1019	250	T	001
guide column	release system	stroke	min. extended length (EL3)	force	model	Index
	H=hydraulic B=bowden wire L=lever	300 350 400 450	819 919 1019 1119	40N - 700 N	T	only for repeating orders



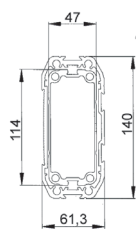
Order number

FSO	H	300	XXX	250	T	001
guide column	release system	stroke	min. extended length (EL3)	force	model	Index
	H=hydraulic B=bowden wire L=lever	100 - 500	depends on model and release system	40N - 700 N	T	only for repeating orders



Order number

FSC	H	300	XXX	250	T	001
guide column	release system	stroke	min. extended length (EL3)	force	model	Index
	H=hydraulic B=bowden wire L=lever	100 - 500	depends on model and release system	40N - 700 N	T	only for repeating orders



Order number

FSS	H	300	XXX	250	T	001
guide column	release system	stroke	min. extended length (EL3)	force	model	Index
	H=hydraulic B=bowden wire L=lever	100 - 500	depends on model and release system	40N - 700 N	T	only for repeating orders