

Take-off blocks Series MX

New

MX2 port: G1/2 - MX3 port: G1
Modular



- » Compact design
- » Available with or without VNR (no return valve)
- » Pressure switches available on request

The Series MX has been realized to offer a multi-sector solution that guarantees saving in terms of installation time, space and costs. A special configurator, available on Camozzi website at <http://catalogue.camozzi.com> (sec. Configurators), allows the customer to choose the most suitable solution for his application, selecting single components or by configuring assembled FRLs.

The Take-off blocks, when equipped with a no return valve, can be used to bleed non lubricated air.

GENERAL DATA

| | |
|---|--|
| Construction | modular, compact, diaphragm-type |
| Materials | see TABLE OF MATERIALS (pag. 3/1.45.02) |
| Ports | MX2: G1/2 MX3: G1 |
| Take-off ports | MX2: G1/2 MX3: G1 |
| Mounting | in-line wall-mounting (by means of clamps) |
| Operating temperature | -5°C + 50°C up to 16 bar (with the dew point of the fluid lower than 2°C at the min. working temperature) -5°C + 60°C up to 10 bar (with the dew point of the fluid lower than 2°C at the min. working temperature) |
| Operating pressure | 0 + 16 bar |
| Nominal flow at 6 bar with $\Delta p = 1$ bar | MX2-1/2-B00 = 6800 NI/min MX2-1/2-B01 = 5700 NI/min MX3-1-B00 = 14500 NI/min MX3-1-B01 = 10500 NI/min |
| Fluid | compressed air |

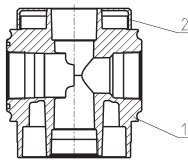
CODING EXAMPLE

| | | | | | | | | |
|-----------|----------|----------|------------|----------|----------|-----------|----------|-----------|
| MX | 2 | - | 1/2 | - | B | 00 | - | LH |
|-----------|----------|----------|------------|----------|----------|-----------|----------|-----------|

| | |
|------------|--|
| MX | SERIES |
| 2 | SIZE: 2 = G1/2 3 = G1 |
| 1/2 | PORT: 2 = G1/2 3 = G1 |
| B | TAKE-OFF BLOCK |
| 00 | DESIGN TYPE: 00 = without no return valve (standard) 01 = with no return valve |
| LH | FLOW DIRECTION: = from left to right (standard) LH = from right to left |

For the assembly of a single component with fixing flanges or wall-mounting, see the section "FRL Series MX Assembled" (pag. 3/1.50.01)

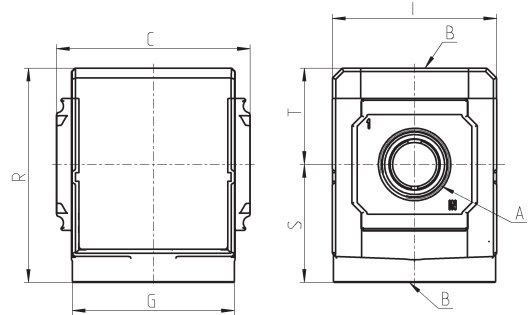
Take-off blocks Series MX - materials New



| PARTS | MATERIALS |
|---------------------|------------|
| 1 = Body | Aluminium |
| 2 = Covering | Polyacetal |
| Seals | NBR |

Take-off blocks Series MX - dimensions

New



BL01 = take-off block



BL02 = take-off block with VNR

| Mod. | A | B | C | G | I | R | S | T | Weight (Kg) |
|--------------------|------|------|------|----|----|----|------|------|-------------|
| MX2-1/2-B00 | G1/2 | G1/2 | 70 | 65 | 68 | 86 | 47,5 | 38,5 | 0.4 |
| MX3-1-B00 | G1 | G1 | 89,5 | 75 | 76 | 99 | 54,5 | 44,5 | 0.6 |