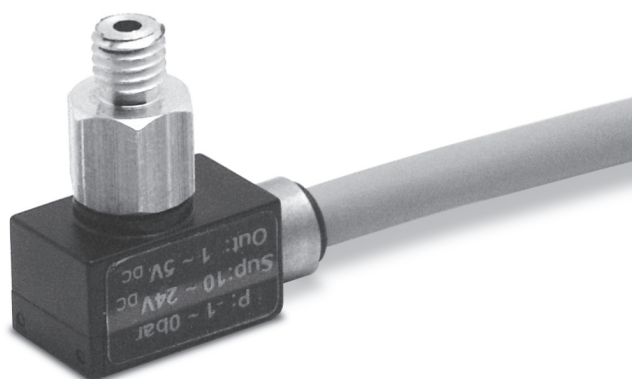


Electronic miniature vacuum switches Series SWM

These vacuum switches are used in measuring ranges between -1 and 0 bar.

2

CONTROL



- » Small dimension and reduced weight
- » Available with analog or digital output
- » High measuring accuracy
- » Possibility to connect with M5 thread or 6 mm plug-in tubes

Applications:

- Measurement of vacuum values close to the suction pad
- Electric output signal

These vacuum switches can be mounted directly at the gripping point of a handling system, also when subject to high acceleration forces.

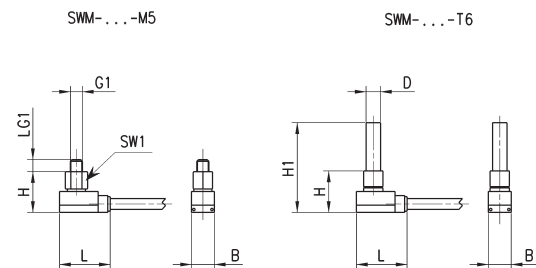
GENERAL DATA

Type of vacuum switch	electronic, mini sensor and connection
Connection	- M5 thread - plug-in tubes
Output signal	analog or digital

CODING EXAMPLE

SW	M	-	VA0	-	T6
SW	SERIES SW = transducer				
M	VERSION m = Micro				
VA0	OUTPUT SIGNAL VA0 = analog output VD6 = digital output with switching point set to -600 mbar				
T 6	CONNECTION T6 = with diam. 6 mm plung in tube M5 = male thread M5				

Vacuum switches Series SWM



DIMENSIONS

Mod.	B	D	G1	H	H1	L	LG1	SW1
SWM-VA0-M5	9,5	-	M5	16,9	-	21	5	8
SWM-VA0-T6	9,5	6		17,2	37,2	21	-	-
SWM-VD6-M5	9,5	-	M5	16,9	-	21	5	8
SWM-VD6-T6	9,5	6		17,2	37,2	21	-	-

TECHNICAL DATA

Mod.	SWM-VA0-M5	SWM-VA0-T6	SWM-VD6-M5	SWM-VD6-T6
Fluid	Non-aggressive gas, dry air, without lubrication.	Non-aggressive gas, dry air, without lubrication.	Non-aggressive gas, dry air, without lubrication.	Non-aggressive gas, dry air, without lubrication.
Work area	-1 ÷ 0 bar	-1 ÷ 0 bar	-1 ÷ 0 bar	-1 ÷ 0 bar
Max overpressure [bar]	5	5	5	5
Precision	± 1% work area	± 1% work area	± 1% work area	± 1% work area
Hysteresis	-	-	Fixed: ca.20 mbar	Fixed: ca.20 mbar
Output signal	Analogic: 1...5 V	Analogic: 1...5 V	Digital	Digital
Max output current [mA]	-	-	60	60
Switching point	-	-	-600 mbar	-600 mbar
Signalling	-	-	LED	LED
Electric connection	Cable	Cable	Cable	Cable
Voltage	10-24V-DC	10-24V-DC	10-24V-DC	10-24V-DC
IP Protection	IP 40	IP 40	IP 40	IP 40
Temperature effect	± 3% measurement range	± 3% measurement range	± 3% measurement range	± 3% measurement range
Operating temperature	0°C ÷ 50 °C	0°C ÷ 50 °C	0°C ÷ 50 °C	0°C ÷ 50 °C
Weight [g]	75	75	75	75