

Bracket Standard white series

B-W/B Series

Joiner Standard white series

J-W Series



Dimensions and applications

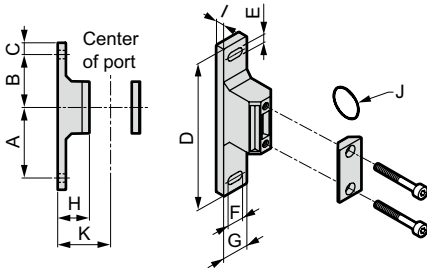
T type bracket set

● Model no.: B110-W·B310-W·B410-W·B810-W

● Applications



Note: Select B410-W when using the 3000-W Series and 4000-W Series combined.



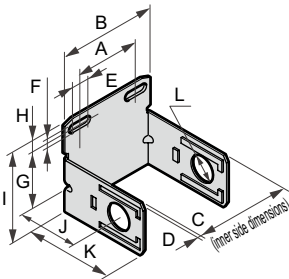
Model no.	Applicable model	A	B	C	D	E	F	G	H	I	J	K
B110-W	1000 Series	45	35	10	100	5.5	7.5	16	25	7.5	JASO-2013	40
B310-W	2000 Series	60	45	10	125	7	14	22	27	7	JISB2401-P21	45
	3000 Series											
B410-W	4000 Series	60	45	10	125	7	14	22	37	7	JISB2401-P21	55
B810-W	6000 Series	70	50	15	150	9	14	27	37	8	AS568-127	65
	8000 Series											

C type bracket

● Model no.: B120·B220·B320·B420·B620·B820

● Attachment: BW

● Applications



Model no.	Applicable model	A	B	C	D	E	F	G	H	I	J	K	L
B120	1000 Series	44	68	40	12.0	10	6.5	35	8.5	61.5	40	60	ø19.5
B220	2000 Series	28	54	50	12.3	10	7	33	8	63	45	69	17.3
B320	3000 Series	34.5	67	63	12.3	16.5	7	45	9	75.5	45	69	ø21.7
B420	4000 Series	55	84	80	12.3	14.0	7	45	9	75.5	55	79	ø21.7
B620	6000 Series	68	104	90	12.3	16	9	54	11	97.5	60	97	ø35
B820	8000 Series	68	104	100	12.3	16	9	50	11	93.5	65	102	ø35

L type bracket

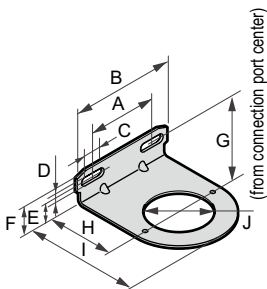
● Model no: B130·B230·B330·B430

● Attachment: B3W

Loosen the mounting nut to remove the knob. After inserting L type bracket, fix the bracket by the mounting nut. Press the knob in manually after fixing.

Refer to page 15 for the details.

● Applications



Model no.	Applicable model	A	B	C	D	E	F	G	H	I	J	Other
B130	1000 Series	44	68	10	6.5	16	24.5	45	40	59	ø26.5	
B230	2000 Series	28	54	10	7	18	26	52	45	69	38	
B330	3000 Series	34.5	67	16.5	7	17.5	26	58 (63.5)	45	76	ø40	Values in () are for W3000·3100
B430	4000 Series 6000 Series	55	84	14	7	17.5	26	58	55	94	ø47	

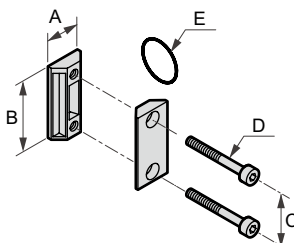
Joiner set

● Model no.: C1000-J100-W

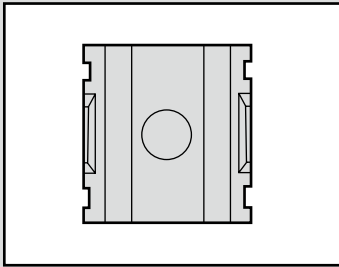
C4000-J400-W

C8000-J800-W

● Applications



Model no.	Applicable model	A	B	C	D	E
C1000-J100-W	1000 Series	10	36	26	M3.5	JASO-2013
C4000-J400-W	2000 Series	21	44	32	M5	JIS B2401-P21
	3000 Series					
	4000 Series					
C8000-J800-W	6000 Series	26	65	50	M6	AS568-127
	8000 Series					



Distributor Standard white series

D101/D401/D801/D300-W Series

Applicable for pipe branching.

Port size: 1/8 to 1

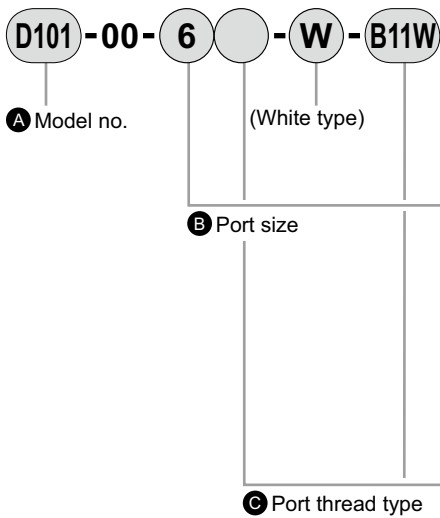
JIS symbol $\begin{matrix} Rc1/4 & Rc3/8 \\ | & | \\ 1/4 & Rc1/4 & 3/8 \\ (Rc3/8) & & Rc \\ | & & | \\ Rc1/4 & Rc3/8 \end{matrix}$



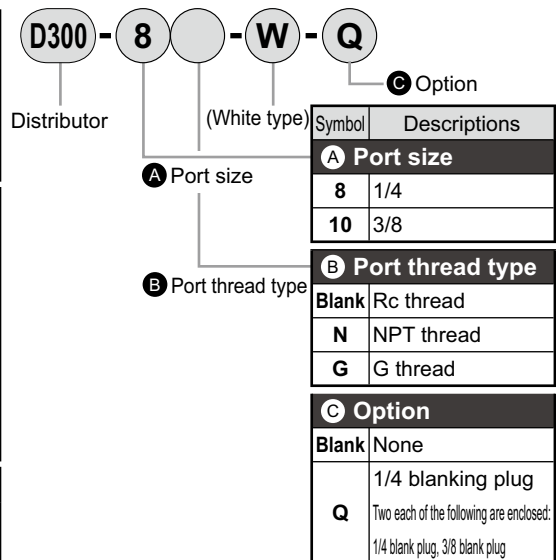
Specifications

Descriptions	D101-00-W	D401-00-W	D801-00-W	D300-W
Working fluid	Compressed air			
Max. working pressure MPa	1.0			
Withstanding pressure MPa	1.5			
No. of branch ports	1			4
Port size Rc, PT,	1/8, 1/4	1/4, 3/8, 1/2	3/4, 1	1/4, 3/8
Working temperature °C	5 to 60			
Product weight kg	0.045	0.13	0.35	0.26

How to order



Symbol	Descriptions			
A Model no.				
D101	For 1000 Series			
D401	For 2000, 3000, 4000 Series			
D801	For 6000, 8000 Series			
B Port size				
	D101	D401	D801	
6	1/8	●		
8	1/4	●	●	
10	3/8		●	
15	1/2		●	
20	3/4			●
25	1			●
C Port thread type				
Blank	Rc thread			
N	NPT thread			
G	G thread			
D T type bracket				
Blank	None			
B11W	For 1000 Series	●	●	●
B31W	For 2000 Series		●	
B41W	For 4000 Series		●	
B81W	For 6000 Series			●



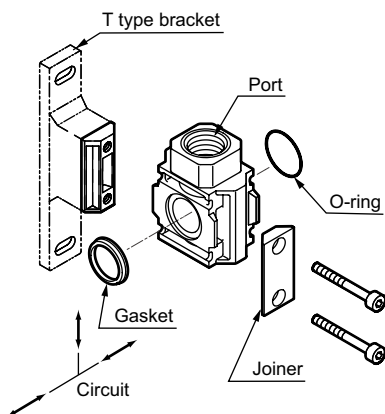
Cautions for model No. selection

- Note 1: A joiner set (joiner/bolt/O-ring) and a gasket are attached as standard.
- Note 2: Consult with CKD for 2 way branch.
- Note 3: D401-W can be connected to both 3000-W and 4000-W series.

Cautions for model No. selection

- Note 1: When using with C3000-W, C4000-W, a joiner set C4000-J400-W, or T type bracket set B310-W or B410-W is required to connect.
- Note 2: Joiner set C4000-J400-W or T type bracket set should be ordered separately. (Refer to page 152)

How to install (D101-00-W, D401-00-W, D801-00-W)

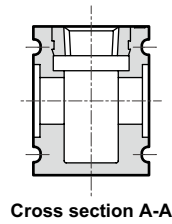
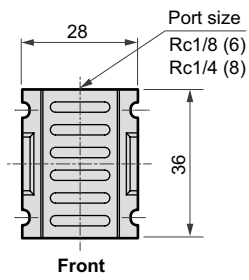
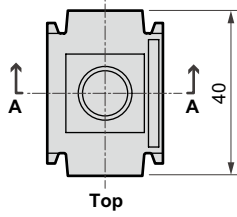


- Note 1: When installing at the primary side, insert an O ring, while installing at the secondary side, insert a gasket.
- Note 2: When inserting O ring and gasket to assemble, O ring and gasket must not be folded.

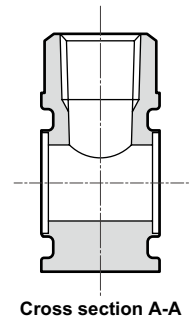
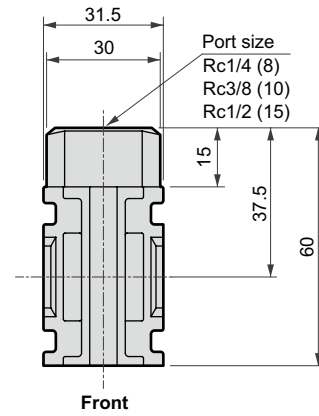
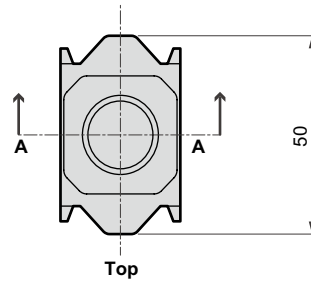
Example (D101-00-W, D401-00-W, D801-00-W)



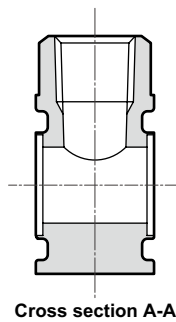
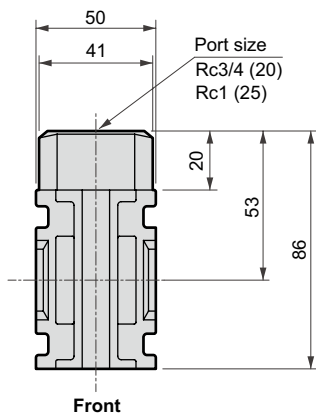
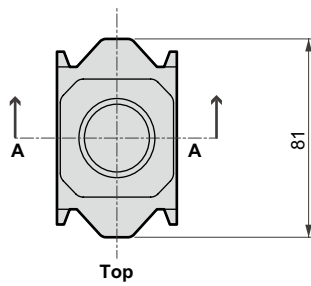
● D101-00-W



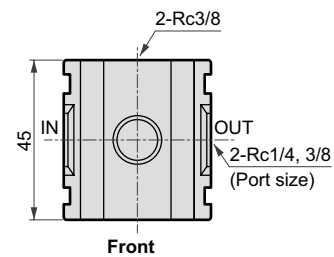
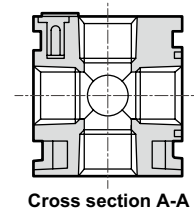
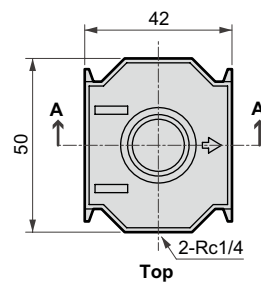
● D401-00-W

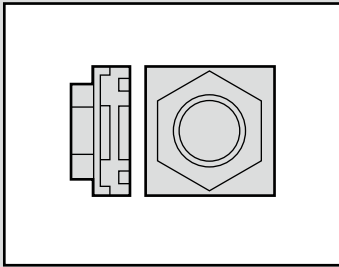


● D801-00-W



● D300-W





Piping adapter standard white series

A100/A400/A800-W Series

Port size: 1/8 to 1

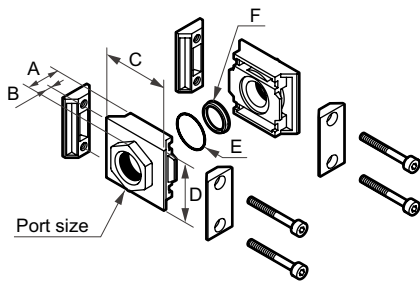


Dimensions and applications

Piping adaptor set

- Model no.: A100-6, 8, 10-W
A400-8, 10, 15, 20-W
A800-20, 25, 32-W

● Applications



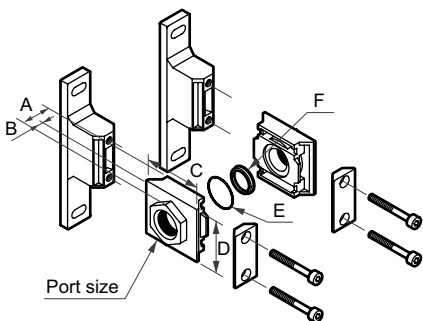
Model no.	Port size	Applicable model	A	B	C	D	E (O-ring)	F (Gasket)	Other
A100-6*-W	1/8	1000 Series	21.5	13.5	40	36	JASO-2013 1 programs	1 programs	-
A100-8*W	1/4								
A100-10*-W	3/8								
A400-8*-W	1/4	2000 3000 Series Series Series	20 (25) {34}	6 (11) {20}	50	45	JISB2401 P21 1 programs	1 programs	Numbers in () are for 3/4 Numbers in { } are for 1
A400-10*-W	3/8								
A400-15*-W	1/2								
A400-20*-W	3/4								
A400-25*-W	1								
A800-20*-W	3/4	6000 8000 Series	35 (38)	15 (18)	81	66	AS568-127 1 programs	1 programs	Numbers in () are for 1 1/4
A800-25*-W	1								
A800-32*-W	1 1/4								

* Blank: Rc thread/N: NPT thread/G: G thread

Piping adaptor set with T type bracket

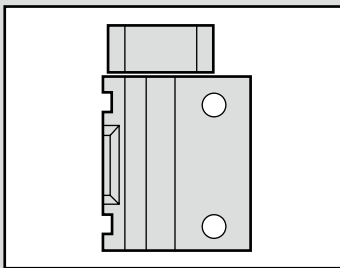
- Model no.: A100-6, 8, 10-W-B11W
A400-8, 10, 15-W-B31W
A400-8, 10, 15, 20-W-B41W
A800-20, 25, 32-W-B81W
(T type bracket)

● Applications



Model no.	Port size	Applicable model	A	B	C	D	E (O-ring)	F (Gasket)	Other
A100-6*-W-B11W	1/8	1000 Series	21.5	13.5	40	36	JASO-2013 1 programs	1 programs	-
A100-8*-W-B11W	1/4								
A100-10*-W-B11W	3/8								
A400-8*-W-B31W	1/4	2000 3000 Series	20	6	50	45	JISB2401 P21 1 programs	1 programs	
A400-10*-W-B31W	3/8								
A400-15*-W-B31W	1/2								
A400-8*-W-B41W	1/4								
A400-10*-W-B41W	3/8								
A400-15*-W-B41W	1/2	4000 Series	20 (25) {34}	6 (11) {20}	50	45	JISB2401 P21 1 programs	1 programs	Numbers in () are for 3/4 Numbers in { } are for 1
A400-20*-W-B41W	3/4								
A400-25*-W-B41W	1								
A800-20*-W-B81W	3/4	6000 8000 Series	35 (38)	15 (18)	81	66	AS568-127 1 programs	1 programs	Numbers in () are for 1 1/4
A800-25*-W-B81W	1								
A800-32*-W-B81W	1 1/4								

* Blank: Rc thread/N: NPT thread/G: G thread



Lpiping adaptor White Series

A101/A401/A801-W Series

Port size: 1/8 t 1

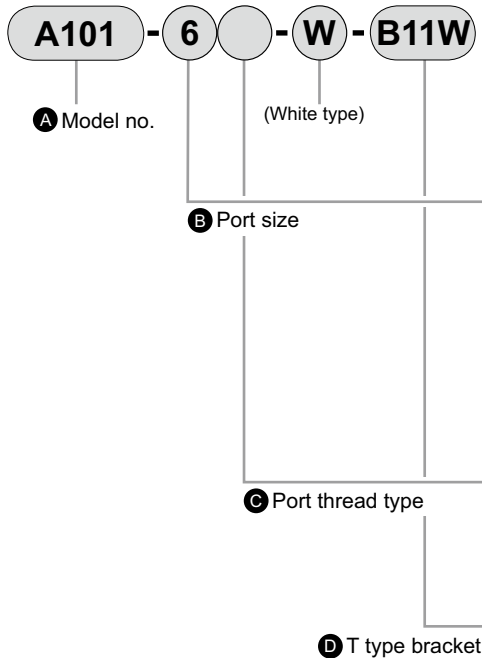


Specifications

Descriptions	A101-W	A401-W Note 1	A801-W
Working fluid	Compressed air		
Max. working pressure MPa	1.0		
Withstanding pressure MPa	1.5		
Port size Rc, PT,	1/8, 1/4	1/4, 3/8, 1/2	3/4, 1
Working temperature °C	5 to 60		
Product weight kg	0.045	0.13	0.4

Note 1: A401-W can be connected to both 3000-W Series and 4000-W Series.

How to order



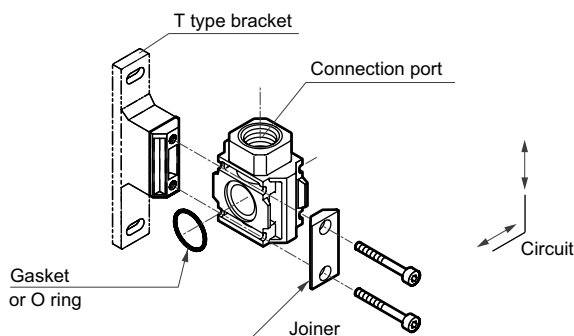
Symbol	Descriptions				
A Model no.					
A101	L type piping adaptor				
A401	L type piping adaptor				
A801	L type piping adaptor				
B Port size					
		A101	A401	A801	
6	1/8	●			
8	1/4	●	●		
10	3/8		●		
15	1/2		●		
20	3/4			●	
25	1			●	
C Port thread type					
Blank	Rc thread				
N	NPT thread				
G	G thread				
D T bracket					
Blank	None	Note 1	●	●	●
B11W	For 1000 Series		●		
B31W	For 2000 Series For 3000 Series			●	
B41W	For 4000 Series			●	
B81W	For 6000 Series For 8000 Series				●

- Applicable models
- A101-6, 8-W
..... 1000-W Series
- A401-8, 10, 15-W
..... 2000, 3000, 4000-W Series
- A801-20, 25-W
..... 6000, 8000-W Series

⚠ Cautions for model No. selection

Note 1: Joiner set (joiner, bolt, O ring) and 1 gasket included.

L type piping adaptor




● Applications



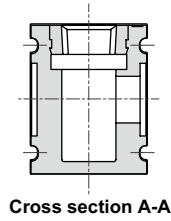
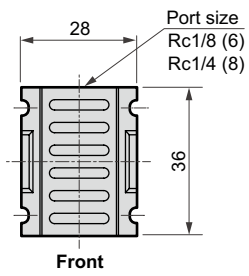
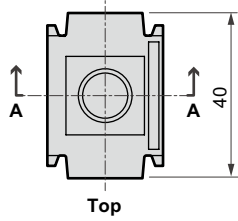
Note: Insert the fitting for replacement vertically until it reaches the back. Insert the O ring when mounting on the primary side for the air flow, and insert the gasket when mounting on the secondary side.

Note: Refer to the next page for dimensions.

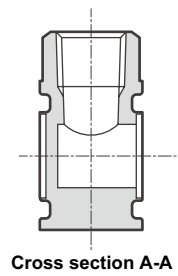
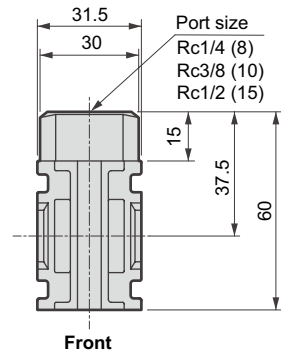
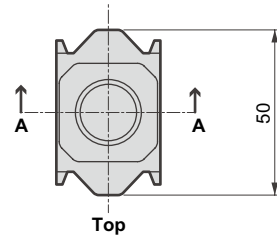
Piping adaptor

Dimensions 

● A101-W



● A401-W



● A801-W

