



2 port pilot kick solenoid valve

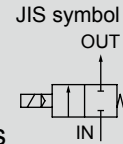
CXU30-ADK Series

NC (normally closed)

Diaphragm structure

Modular connection with 3000 Series

Suitable as modular component master valves



Module
dedicated

RoHS

In
line

Specifications

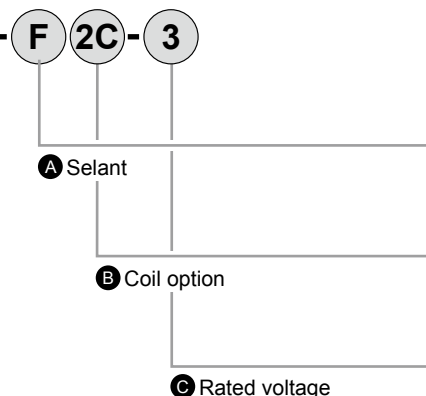
Descriptions		CXU30-ADK
Working fluid		Compressed air
Working pressure differential range MPa		AC: 0 to 1.0, DC: 0 to 0.7
Max. working pressure MPa		2
Withstanding pressure (water) MPa		4
Fluid temperature (Note 1) °C		Nitrile rubber: -10 to 60, fluoro rubber: 5 to 60
Ambient temperature °C		-10 to 60
Atmosphere		Does not contact water, corrosive or flammable gas.
Valve structure		Pilot kick poppet structure Diaphragm operated
Valve leakage	cm ³ /min	10 or less
Mounting		Flexible
Port size		None
Orifice	mm	12
C [dm ³ /(s·bar)]	Note 2	10.4
b		0.46
Weight	kg	0.65
Electrical specifications		
Rated voltage		100VAC, 24VDC
Apparent power VA	50Hz	24
	60Hz	19
Power consumption W	50Hz	10
	60Hz	8
	DC	11
Heat proof class		B

Note 1: To be unfrozen

Note 2: Effective sectional area S and sonic conductance C are converted as $S \approx 5.0 \times C$.

How to order

CXU30-ADK-00 - F 2C - 3



Symbol	Descriptions
A Selant	
Blank	Nitrile rubber
F	Fluoro rubber
B Coil option	
2C	Grommet lead wire *11
2HS	DIN terminal box with light, surge suppressor (Pg11)
C Rated voltage	
1	100VAC 50/60Hz, 110VAC 60Hz
3	24VDC

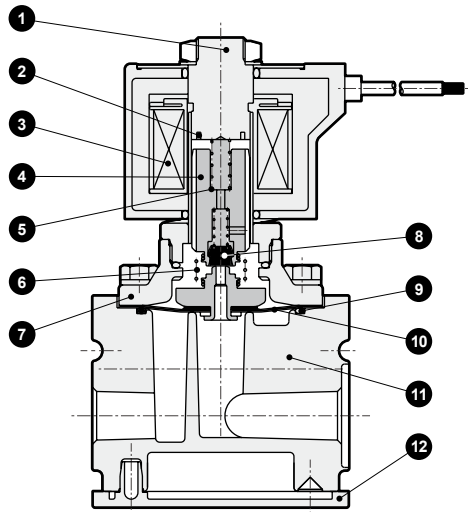
Note 1: Coil option 2C is available for rated voltage 【1】 only.

⚠ Cautions for model No. selection

Note: Joiner set included

Internal structure and parts list

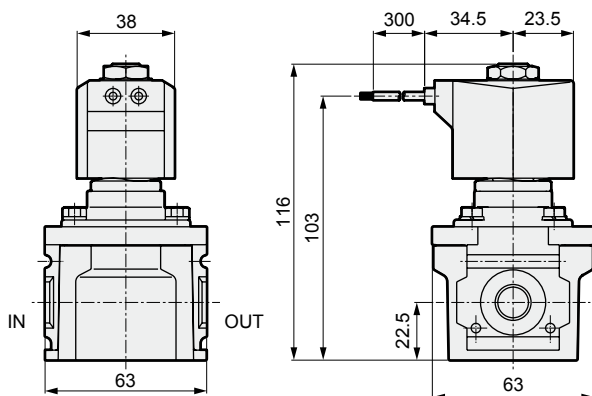
● CXU30-ADK



No.	Part name	Material	
1	Core assembly	SUS	Stainless steel
2	Shading coil	Cu	Copper
3	Coil	—	—
4	Plunger assembly	SUS	Stainless steel
5	Plunger spring	SUS	Stainless steel
6	Kick spring	SUS	Stainless steel
7	Stuffing	C	Bronze casting
8	Spring	NBR (FKM)	Nitrile rubber (fluoro rubber)
9	Diaphragm assembly	SUS•NBR (SUS•FKM)	Stainless steel•nitrile rubber (stainless steel•fluoro rubber)
10	O-ring	NBR (FKM)	Nitrile rubber (fluoro rubber)
11	Body	ADC	Aluminum alloy die-casting
12	Plate cover	ABS	ABS resin

Dimensions

● Grommet lead wire type CXU30-ADK-00-*2C-*



● With DIN terminal box (Pg7) type CXU30-ADK-00-*2HS-*

