

Miniature regulator

RB500 Series

Compact / space saving structure
Port size: Push-in joint 4 and 6 dia.

JIS symbol



CAD DATA AVAILABLE.

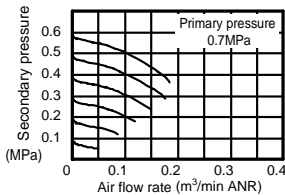
Specifications

Descriptions		RB500
Working fluid		Compressed air
Max. working pressure	MPa	1.0
Withstanding pressure	MPa	1.5
Ambient temperature range °C		5 to 60
Set pressure range MPa		0.05 to 0.7 (Note 1)
Relief		With relief mechanism
Port size	IN-OUT	Push-in joint: 4, 6 dia.
	GAUGE	Rc1/8
Product mass	g	80

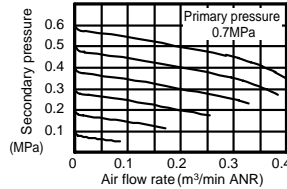
Note 1: 0.05 to 0.35 for low pressure specifications.

Flow characteristics

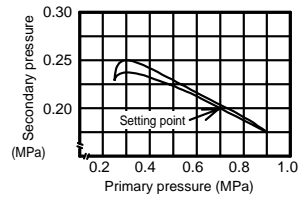
• RB500-SSC4



• RB500-SSC6



Pressure characteristics



How to order



Model

A Connection

B Option

C Accessory

Symbol	Descriptions		
A Connection			
Direction	IN	S	Straight
		L	Elbow
	OUT	S	Straight
		L	Elbow
Port size		C4 4 dia.	
		C6 6 dia.	
B Option			
Blank	Standard products		
P	Panel mount Note 2		
L	For low pressure		
N	Non-relief		
T	Without pressure gauge		
C Accessory			
Blank	21 dia. 0 to 1.0MPa gauge	Standard	
Note 1	27 dia. 0 to 0.4MPa gauge		
G39	27 dia. 0 to 1.0MPa gauge	Option	
D Ozone proof			
P11	Ozone proof specifications (custom order)		

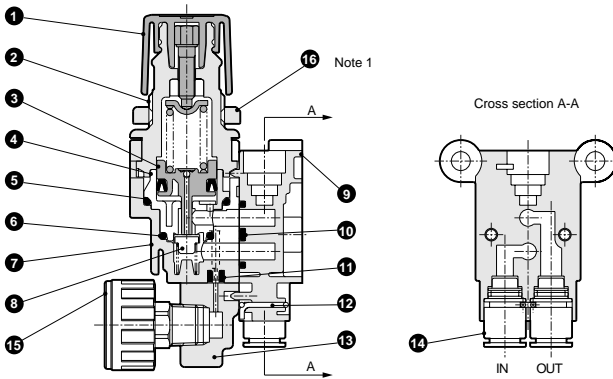
Note on model No. selection

Note 1: 21 dia. 0 to 1.0MPa pressure gauge is provided as standard.

However for low pressure, 27 dia. 0 to 0.4MPa low pressure gauge is provided.

Note 2: For panel installation, indicate option symbol "P".

Internal structure and parts list



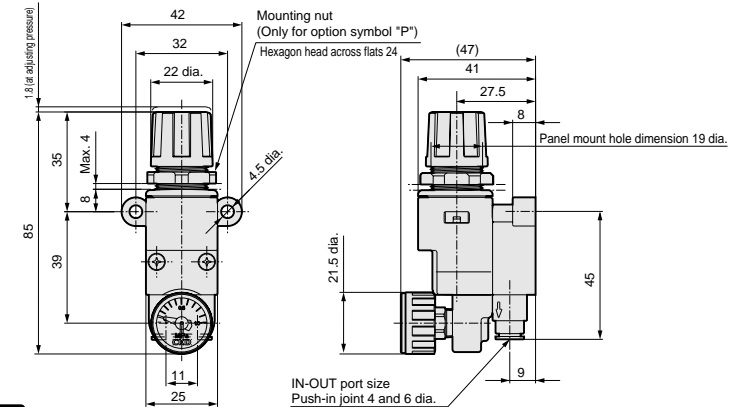
Note 1: Mounting nut is optional.
Nut is attached only for option symbol "P".

No	Parts name	Material
1	Knob	Polyacetal resin
2	Cover	Polyamide resin
3	Piston assembly	Polyacetal resin / nitrile rubber
4	Piston guide	Polyacetal resin
5	O ring	Nitrile rubber
6	O ring	Nitrile rubber
7	Body	Polyamide resin
8	Valve element	Aluminum / nitrile rubber
9	Pipe block assembly	Polyamide resin / steel
10	Body packing seal	Nitrile rubber
11	Packing seal	Nitrile rubber
12	Stop pin	Stainless steel
13	Gauge plug	Polyamide resin
14	Cartridge joint	
15	Pressure gauge	
16	Mounting nut	Polyacetal resin

Refrigerating type dryer
Desiccant type dryer
High polymer membrane dryer
Air filter
Automatic drain other
F.R.L. (Module)
F.R.L. (Separate)
Small F.R.
Precise R.
Electro pneumatic R.
Auxiliary
Flow control valve
Silencer
Check valve / others
Joint / tube
Vacuum F.
Vacuum R.
Vacuum generator
Vacuum auxiliary / pad
Mechanical pressure SW
Electronic pressure SW
Electronic dif. pres. SW
Seating / close contact conf. SW
Pressure SW for coolant
Flow sensor for air
Total air system
Water cooling refrigerator
Flow sensor for water
F.R.L. unit
Miniature regulator

Dimensions

• RB500 axial piping  (File name: Page 462 or Ending 17)



• RB500 elbows pipe  (File name: Page 462 or Ending 17)

