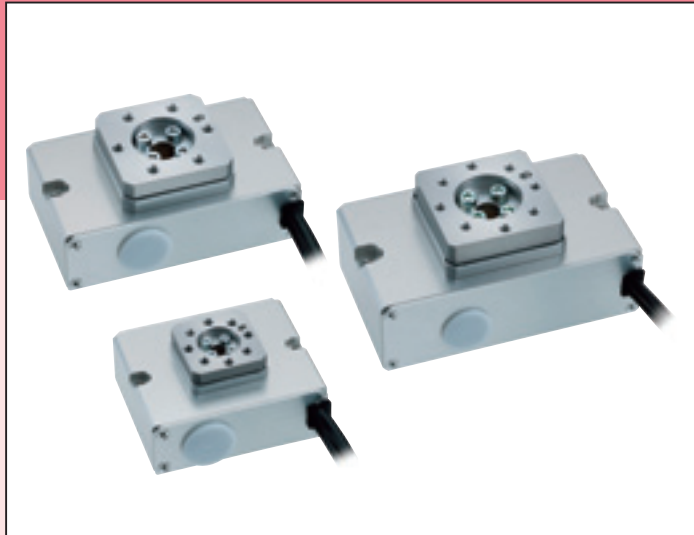


FGRC

Electric actuator
Motor specification

Rotary



CONTENTS

Product introduction	Intro Pages
● Specifications/How to order/Dimensions	
· FGRC-10	30
· FGRC-30	32
· FGRC-50	34
● Model selection	36
● Technical data	38
⚠ Safety precautions	58
Model Selection Check Sheet	70

FGRC Series variation

Model No.	Motor size	Max. torque (N·m)	Max. angular speed (deg/s)
FGRC-10	□20	0.89	200
FGRC-30	□25	2.71	
FGRC-50	□35	4.66	

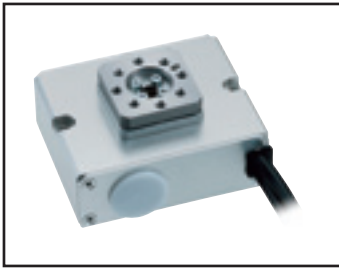
FLSH

FLCR

FGRC

ECR
(controller)

Safety
precautions



Electric actuator Rotary FGRC-10

20 stepper motor



How to order

FGRC - **10** **360 N** **C** **N - F** **S03**

A Size	10
B Encoder	Incremental encoder

C Relay cable	*1 *2
N00	None
S01	Fixing cable 1 m
S03	Fixing cable 3 m
S05	Fixing cable 5 m
S10	Fixing cable 10 m
R01	Movable cable 1 m
R03	Movable cable 3 m
R05	Movable cable 5 m
R10	Movable cable 10 m

*1 Select the controller from page 45.

*2 Refer to page 55 for relay cable dimensions.

Specifications

Motor	<input type="checkbox"/> 20 stepper motor
Encoder type	Incremental encoder
Drive method	Worm gear + belt
Travel angle *1	360
Max. output torque *2 N·m	0.89
Repeatability deg	±0.05
Backlash *3 deg	±0.3
Lost motion deg	0.3 or less
Operation angular speed range deg/s	20 to 200
Pressing operation angular speed range deg/s	20 to 30
Allowable moment of inertia *2 kg·m ²	0.0057
Allowable thrust load N	80
Allowable radial load N	80
Allowable moment N·m	2.5
Motor power supply voltage	24 VDC ±10% or 48 VDC ±10%
Motor section maximum instantaneous current A	1.4
Insulation resistance	10 MΩ, 500 VDC
Withstand voltage	500 VAC for 1 minute
Operating ambient temperature, humidity	0 to 40°C (no freezing) 35 to 80% RH (no condensation)
Storage ambient temperature, humidity	-10 to 50°C (no freezing) 35 to 80% RH (no condensation)
Atmosphere	No corrosive gas, explosive gas, or dust
Degree of protection	IP40
Weight kg	0.65

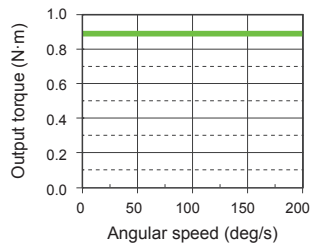
*1 Movable angle is up to 359.9° via travel instructions.

*2 Rotation torque and allowable moment of inertia change in accordance with angular speed and angular acceleration/deceleration. Refer to the table at right for details.

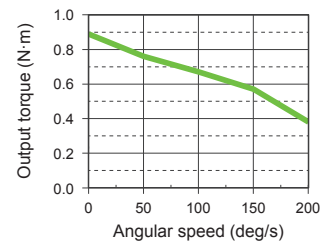
*3 When stopping precision is required, stop with an external stopper, etc., and complete positioning with pressing operation.

Angular speed and output torque

[At 48 VDC]

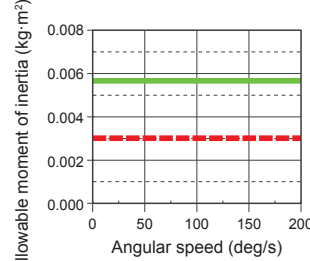


[At 24 VDC]

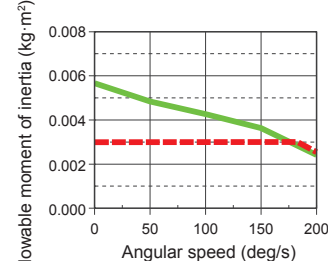


Angular speed and allowable moment of inertia

[At 48 VDC]

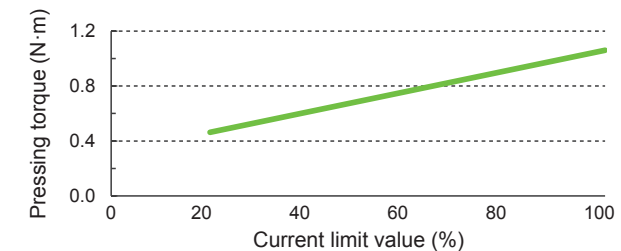


[At 24 VDC]



* When angular acceleration/deceleration is greater than 1700deg/s², operate below the dashed line.

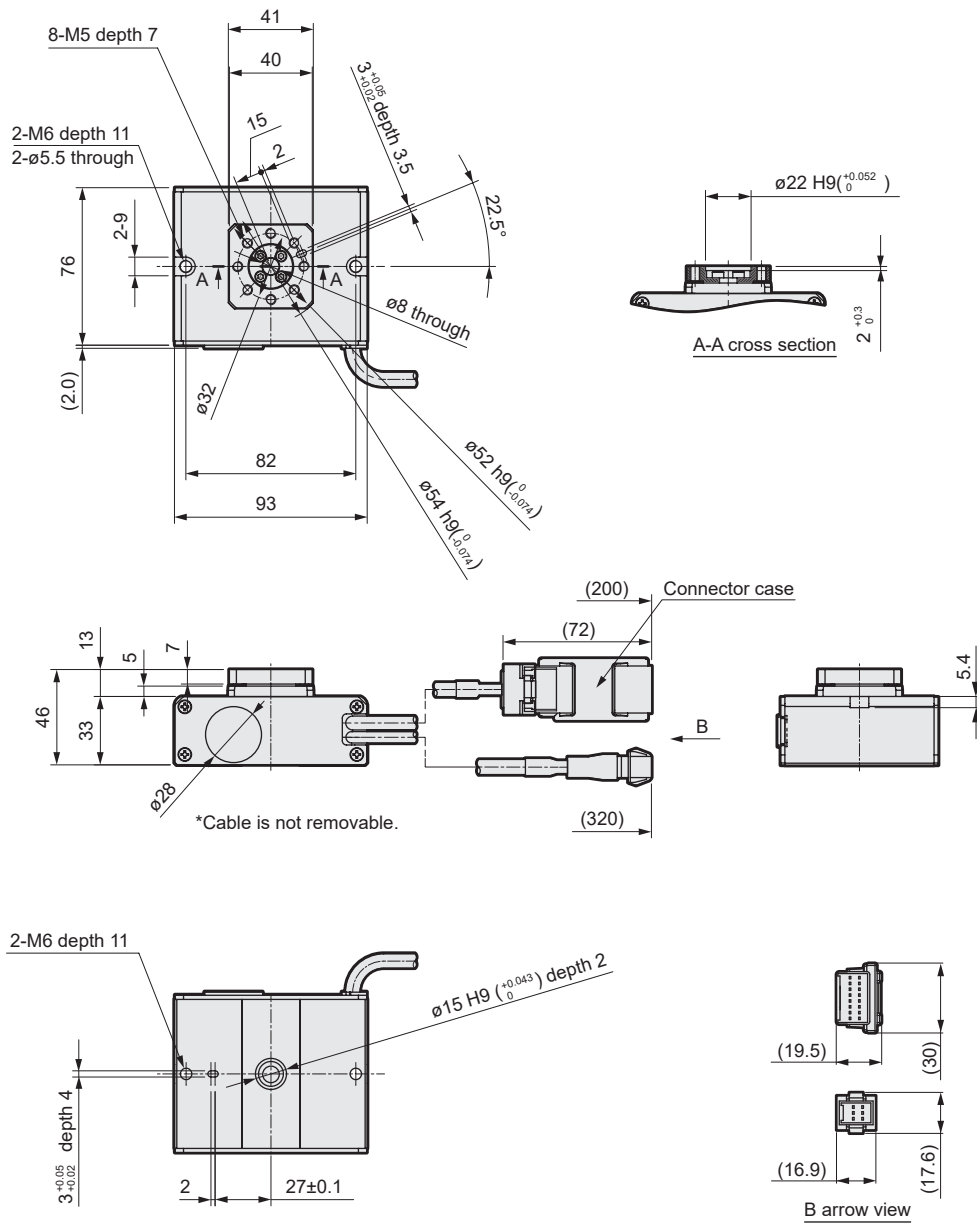
Pressing torque



*1 The pressing torque and current limit value are merely guidelines. Individual motor differences and variations in mechanical efficiency may result in differing actual values, even at the same current value.

Dimensions

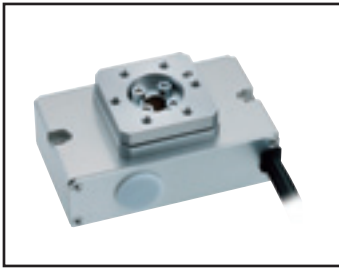
● FGRC-10



*1 The origin position of the actuator may differ from the position shown in the dimensions. The origin offset function allows origin setting at any position.

FLSH
FLCR
FGRC
ECR (controller)

Safety precautions



Electric actuator Rotary FGRC-30

25 stepper motor



How to order

FGRC - **30** **360 N** **C** **N - F** **S03**

A Size	30
B Encoder	Incremental encoder

C Relay cable	*1 *2
N00	None
S01	Fixing cable 1 m
S03	Fixing cable 3 m
S05	Fixing cable 5 m
S10	Fixing cable 10 m
R01	Movable cable 1 m
R03	Movable cable 3 m
R05	Movable cable 5 m
R10	Movable cable 10 m

*1 Select the controller from page 45.

*2 Refer to page 55 for relay cable dimensions.

Specifications

Motor	<input type="checkbox"/> 25 stepper motor
Encoder type	Incremental encoder
Drive method	Worm gear + belt
Travel angle *1	360
Max. output torque *2 N·m	2.71
Repeatability deg	±0.05
Backlash *3 deg	±0.2
Lost motion deg	0.3 or less
Operation angular speed range deg/s	20 to 200
Pressing operation angular speed range deg/s	20 to 30
Allowable moment of inertia *2 kg·m ²	0.0173
Allowable thrust load N	200
Allowable radial load N	200
Allowable moment N·m	5.5
Motor power supply voltage	24 VDC ±10% or 48 VDC ±10%
Motor section maximum instantaneous current A	3
Insulation resistance	10 MΩ, 500 VDC
Withstand voltage	500 VAC for 1 minute
Operating ambient temperature, humidity	0 to 40°C (no freezing) 35 to 80% RH (no condensation)
Storage ambient temperature, humidity	-10 to 50°C (no freezing) 35 to 80% RH (no condensation)
Atmosphere	No corrosive gas, explosive gas, or dust
Degree of protection	IP40
Weight kg	1.05

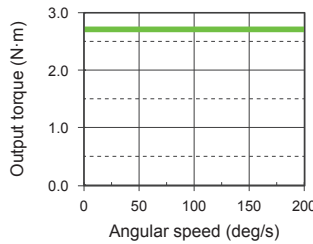
*1 Movable angle is up to 359.9° via travel instructions.

*2 Rotation torque and allowable moment of inertia change in accordance with angular speed and angular acceleration/deceleration. Refer to the table at right for details.

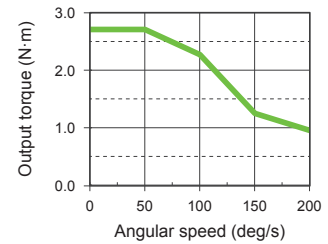
*3 When stopping precision is required, stop with an external stopper, etc., and complete positioning with pressing operation.

Angular speed and output torque

[At 48 VDC]

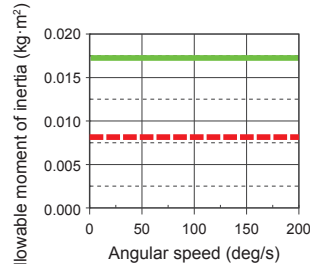


[At 24 VDC]

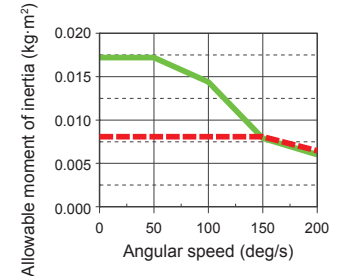


Angular speed and allowable moment of inertia

[At 48 VDC]

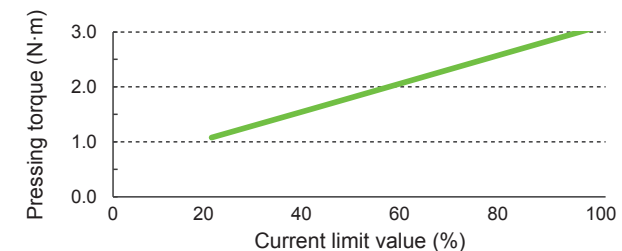


[At 24 VDC]



* When angular acceleration/deceleration is greater than 1700deg/s², operate below the dashed line.

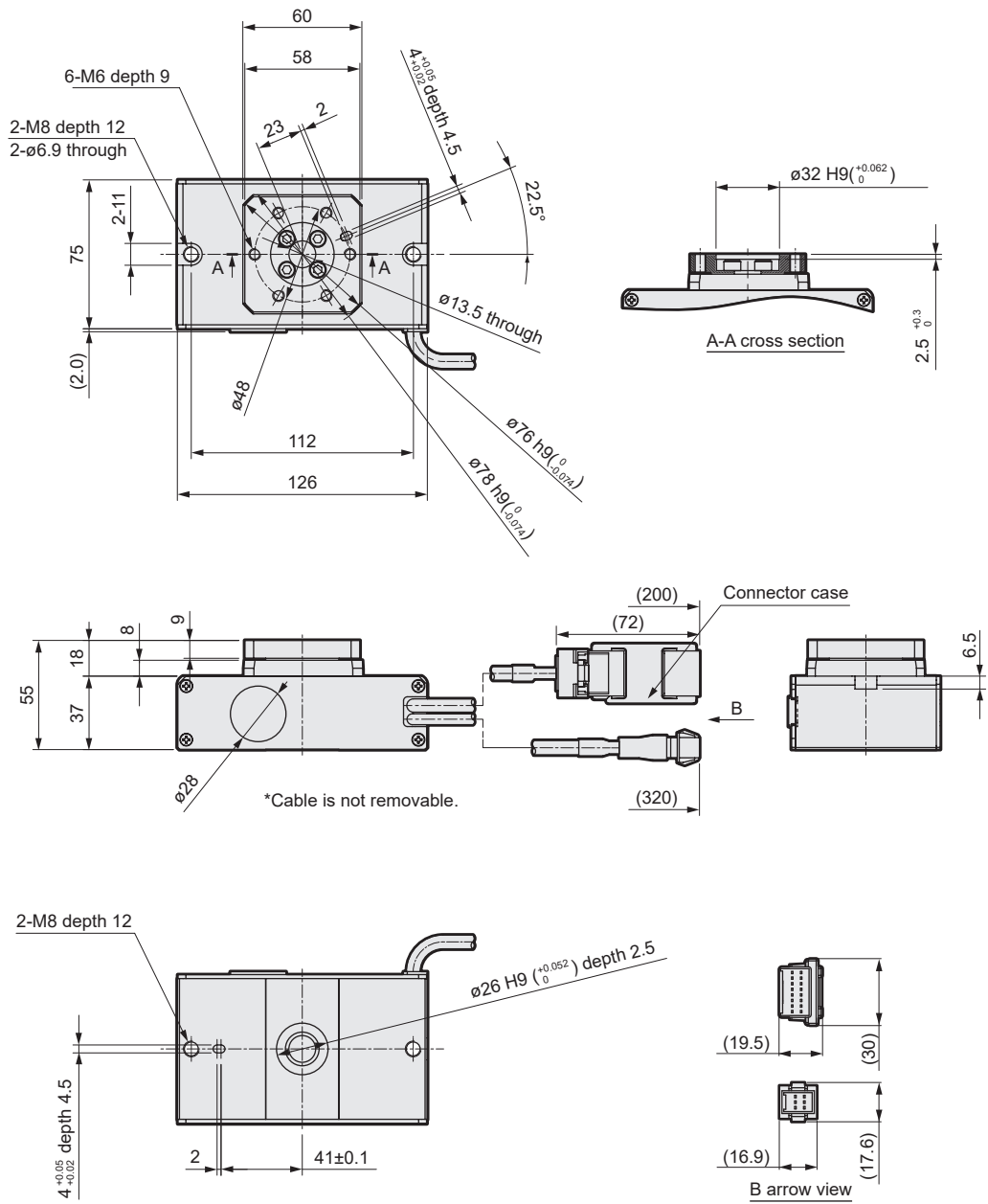
Pressing torque



*1 The pressing torque and current limit value are merely guidelines. Individual motor differences and variations in mechanical efficiency may result in differing actual values, even at the same current value.

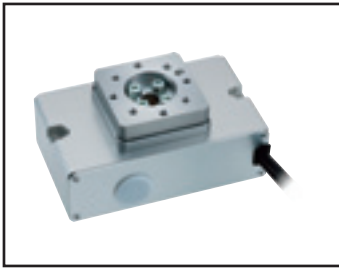
Dimensions

● FGRC-30



*1 The origin position of the actuator may differ from the position shown in the dimensions. The origin offset function allows origin setting at any position.

FLSH
FLCR
FGRC
ECR (controller)
Safety precautions



Electric actuator Rotary FGRC-50

35 stepper motor



How to order

FGRC - **50** **360 N** **C** **N - F** **S03**

A Size	50
B Encoder	
C	Incremental encoder

C Relay cable	*1 *2
N00	None
S01	Fixing cable 1 m
S03	Fixing cable 3 m
S05	Fixing cable 5 m
S10	Fixing cable 10 m
R01	Movable cable 1 m
R03	Movable cable 3 m
R05	Movable cable 5 m
R10	Movable cable 10 m

*1 Select the controller from page 45.

*2 Refer to page 55 for relay cable dimensions.

Specifications

Motor	<input type="checkbox"/> 35 stepper motor
Encoder type	Incremental encoder
Drive method	Worm gear + belt
Travel angle *1	360
Max. output torque *2 N·m	4.66
Repeatability deg	±0.05
Backlash *3 deg	±0.2
Lost motion deg	0.3 or less
Operation angular speed range deg/s	20 to 200
Pressing operation angular speed range deg/s	20 to 30
Allowable moment of inertia *2 kg·m ²	0.0297
Allowable thrust load N	450
Allowable radial load N	320
Allowable moment N·m	10
Motor power supply voltage	24 VDC ±10% or 48 VDC ±10%
Motor section maximum instantaneous current A	4.2
Insulation resistance	10 MΩ, 500 VDC
Withstand voltage	500 VAC for 1 minute
Operating ambient temperature, humidity	0 to 40°C (no freezing) 35 to 80% RH (no condensation)
Storage ambient temperature, humidity	-10 to 50°C (no freezing) 35 to 80% RH (no condensation)
Atmosphere	No corrosive gas, explosive gas, or dust
Degree of protection	IP40
Weight kg	1.85

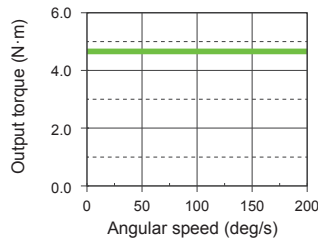
*1 Movable angle is up to 359.9° via travel instructions.

*2 Rotation torque and allowable moment of inertia change in accordance with angular speed and angular acceleration/deceleration. Refer to the table at right for details.

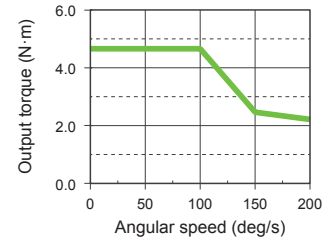
*3 When stopping precision is required, stop with an external stopper, etc., and complete positioning with pressing operation.

Angular speed and output torque

[At 48 VDC]

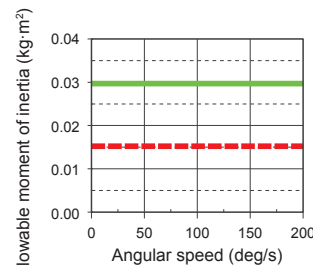


[At 24 VDC]

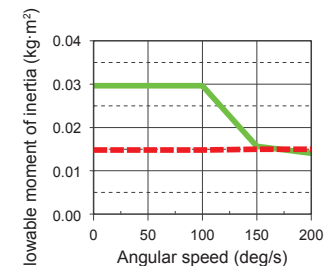


Angular speed and allowable moment of inertia

[At 48 VDC]

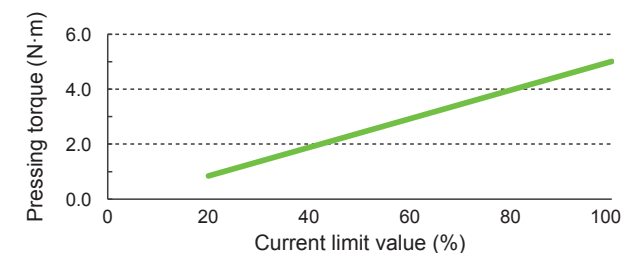


[At 24 VDC]



* When angular acceleration/deceleration is greater than 1700deg/s², operate below the dashed line.

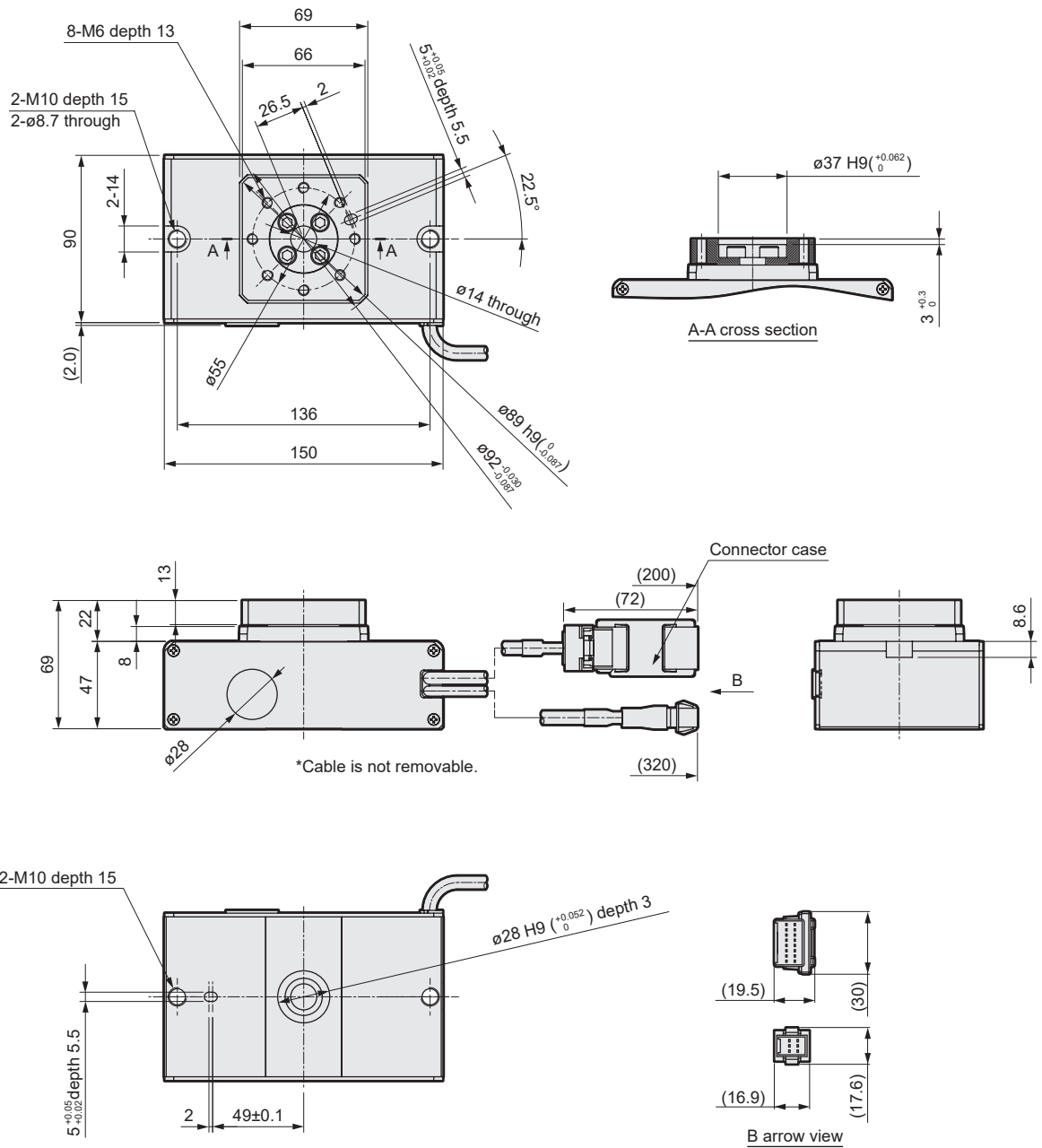
Pressing torque



*1 The pressing torque and current limit value are merely guidelines. Individual motor differences and variations in mechanical efficiency may result in differing actual values, even at the same current value.

Dimensions

● FGRC-50



*1 The origin position of the actuator may differ from the position shown in the dimensions. The origin offset function allows origin setting at any position.

FLSH
FLCR
FGRC
ECR (controller)

Safety precautions