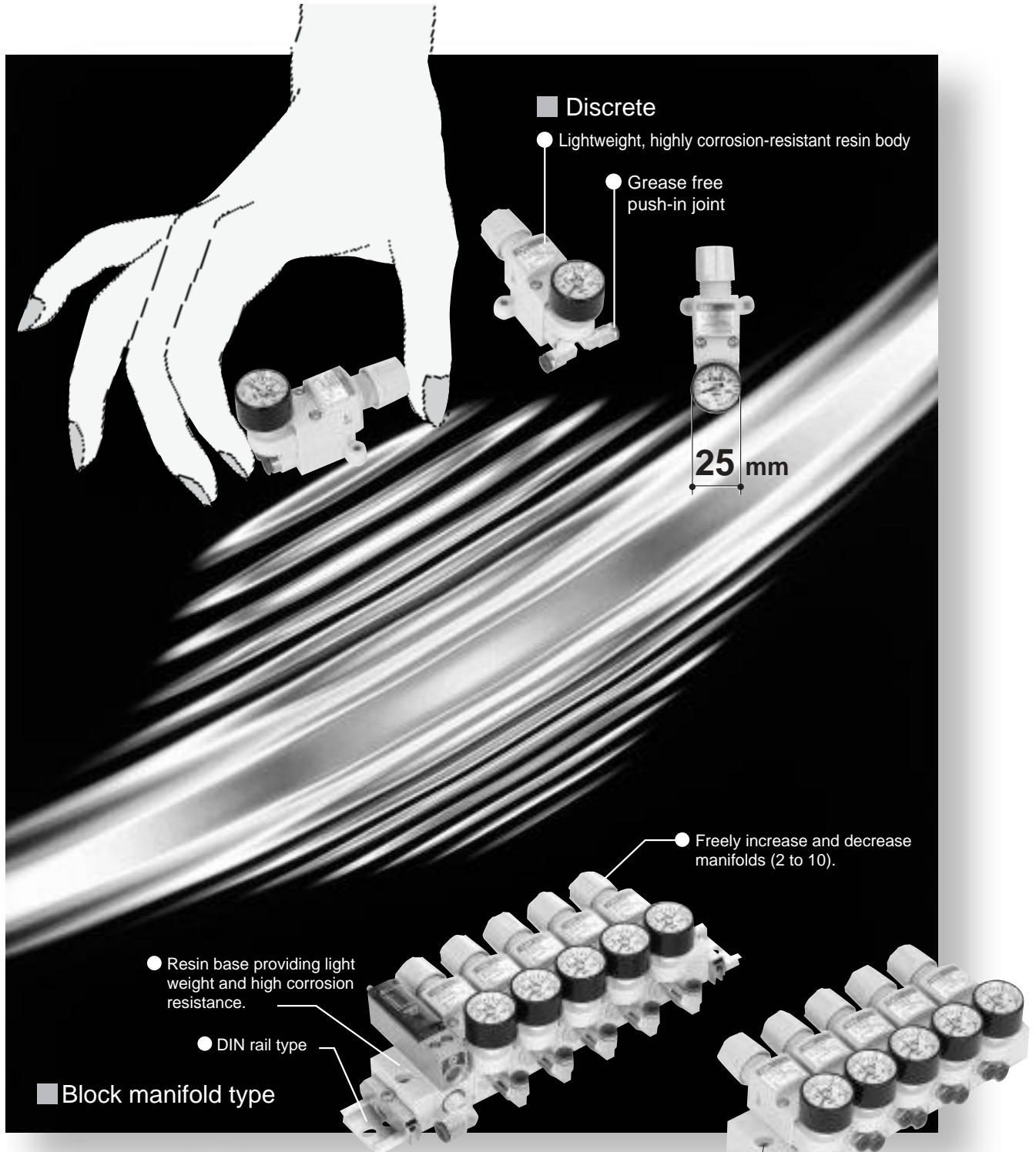


# Precise control starting from

# 0.01MPa achieved with a miniature size.

This miniature direct-acting precision regulator realizes a minimum setting pressure of 0.01 MPa and sensitivity of 0.001 MPa even with compact 25 mm spacing.

Refrigerating type dryer
Desiccant type dryer
High polymer membrane dryer
Air filter
Auto. drain / others
F.R.L. (Module unit)
F.R.L. (Separate)
Compact F.R.
<b>Precise regulator</b>
F.R.L. (Related products)
Clean F.R.
Electro pneumatic regulator
Air booster
Speed control valve
Silencer
Check valve / others
Joint / tube
Vacuum filter
Vacuum regulator
Suction plate
Magnetic spring buffer
Mechanical pressure SW
Electronic pressure SW
Contact / close contact conf. SW
Air sensor
Pressure SW for coolant
Small flow sensor
Small flow controller
Flow sensor for air
Flow sensor for water
Total air system
Total air system (Gamma)
Ending



Compact direct acting precision regulator

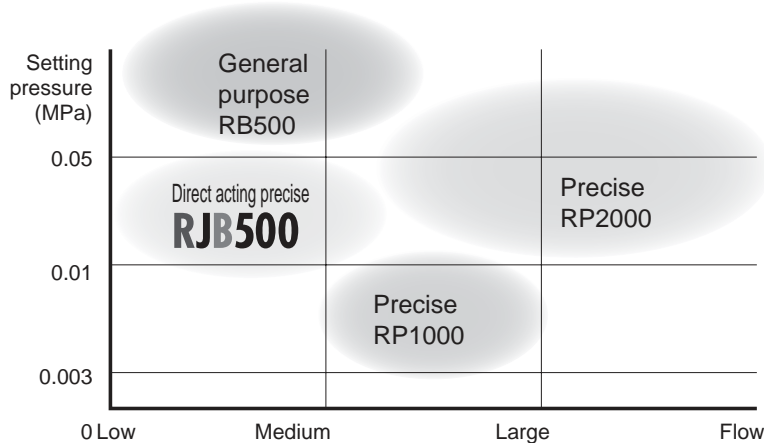
# RJB500 Series

CKD

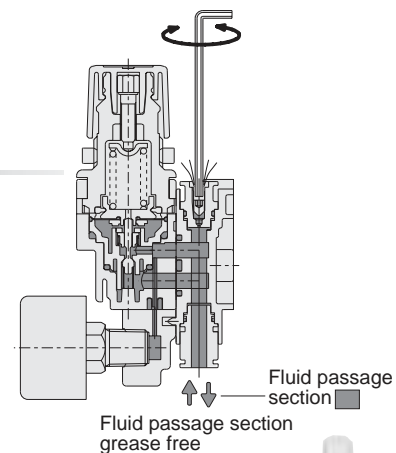
Ideal for semiconductor manufacturing post processes, IT applications, and compact assembly, etc., requiring space saving, precision, and grease-free products

## High-sensitivity control in low pressure ranges

Pressure can be set from 0.01 to 0.2 MPa for low pressure and from 0.02 to 0.5 MPa for standard pressures. Sensitivity is 0.001 MPa for both applications. Highly sensitivity adjustment is realized in low-pressure ranges with a special diaphragm.



Energy is conserved with a variable constant-bleed mechanism



## Grease-free specifications

Standard grease-free specifications are used for fluid passage areas and push-in joints, making this device ideal for applications susceptible to grease.

## Energy saving

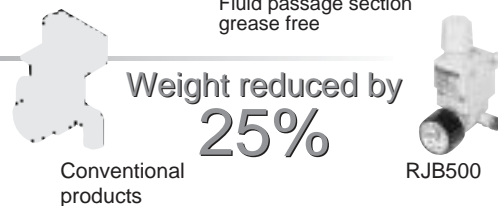
A variable constant-bleed mechanism is used. Minimum air consumption can be set to match the working pressure.

## Compact

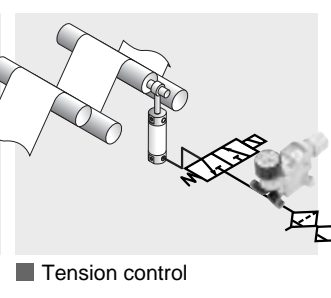
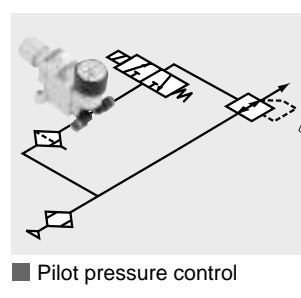
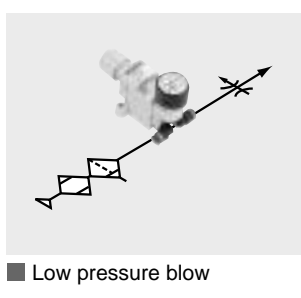
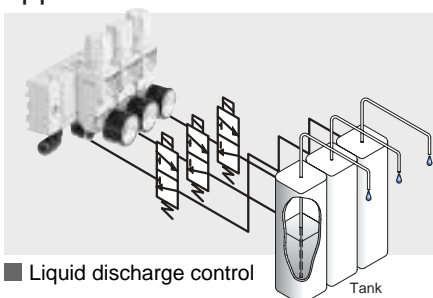
The push-in joint, mounting bracket, and pressure gauge are integrated, saving space and keeping things compact.

## Improved workability

One-touch joints are standard. The piping direction can be selected for straight or elbow.



## Applications



- Refrigerating type dryer
- Desiccant type dryer
- High polymer membrane dryer
- Air filter
- Auto. drain / others
- F.R.L. (Module unit)
- F.R.L. (Separate)
- Compact F.R.
- Precise regulator**
- F.R.L. (Related products)
- Clean F.R.
- Electro pneumatic regulator
- Air booster
- Speed control valve
- Silencer
- Check valve / others
- Joint / tube
- Vacuum filter
- Vacuum regulator
- Suction plate
- Magnetic spring buffer
- Mechanical pressure SW
- Electronic pressure SW
- Contact / close contact cont. SW
- Air sensor
- Pressure SW for coolant
- Small flow sensor
- Small flow controller
- Flow sensor for air
- Flow sensor for water
- Total air system
- Total air system (Gamma)
- Ending

Compact direct acting precision regulator F.R.L. unit