

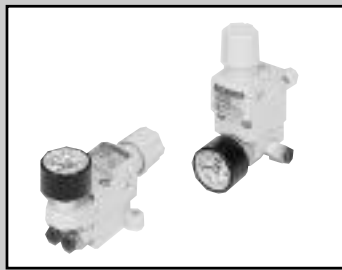
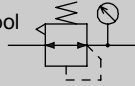
Compact direct operating precision regulator

# RJB500 Series

Grease free specification, compact, space saving type.

Port size: Push-in joint  $\phi 4$ ,  $\phi 6$

JIS symbol



## Specifications

Descriptions		RJB500
Working fluid		Compressed air
Max. working pressure Mpa		1.0
Withstanding pressure Mpa		1.5
Ambient temperature range °C		5 to 60
Set pressure range Mpa		0.02 to 0.5 (0.01 to 0.2) (Note 1)
Sensitivity Mpa		0.001 (lock sensitivity 0.004) (Note 2)
Air consumption $\ell$ /min		1.5 (Note 3)
Port size	IN-OUT	Push-in joint: $\phi 4$ , $\phi 6$
	GAUGE	Rc1/8
Product weight g		90

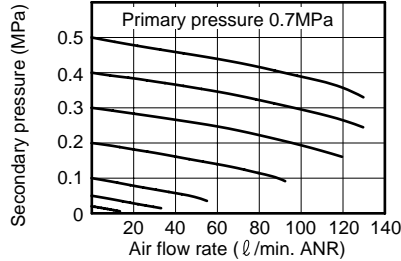
Note 1: Values in parentheses are for low pressure.

Note 2: Set pressure sensitivity for the pressure adjustment knob block's minimum spacing.

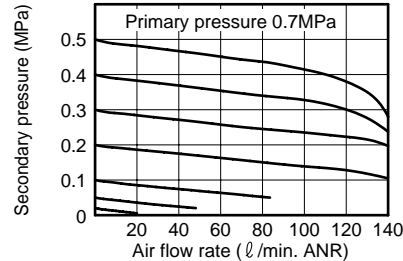
Note 3: Value for secondary side setting pressure 0.1 MPa.

## Flow characteristic

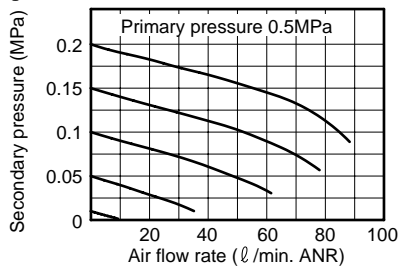
### ● RJB500-\*\*C4



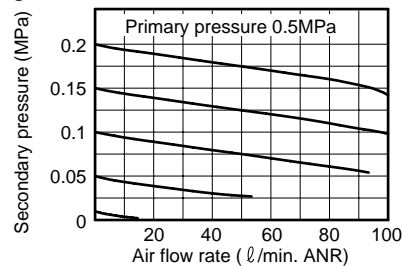
### ● RJB500-\*\*C6



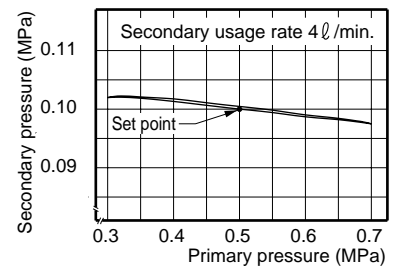
### ● RJB500-\*\*C4-L



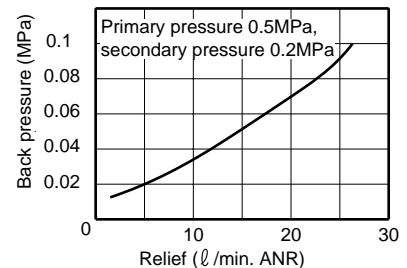
### ● RJB500-\*\*C6-L



## Pressure characteristic



## Relief characteristic



## How to order

**RJB500 - SSC4 - P**

Model no.

A Connection

B Option

Symbol		Descriptions	
<b>A Connection</b>			
Direction	IN	S	Straight
		L	Elbow
	OUT	S	Straight
		L	Elbow
Port size		C4	$\phi 4$
		C6	$\phi 6$
<b>B Option</b>			
Panel mount	Blank	Without nut	
	P	With nut	
Pressure range	Blank	0.02 to 0.5 MPa Note 1	
	L	0.01 to 0.2 MPa Note 2	
Pressure gauge	Blank	With pressure gauge	
	T	Without pressure gauge (gauge port Rc1/8)	

## ⚠ Note on model no. selection

Note 1: A 0 to 1.0 MPa pressure gauge is assembled.

Note 2: A 0 to 0.4 MPa pressure gauge is assembled.

Note 3: For panel installation, indicate option symbol "P".