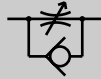


Speed control valve Large bore size type

SC Series

● Port size: Rc3/4 to Rc2

JIS symbol



Specifications

Descriptions	SC-20A	SC-25A	SC-32A	SC-40A	SC-50A	
Working fluid	Compressed air					
Max. working pressure MPa	1.0		0.7			
Min. working pressure MPa	0.05		0.05			
Withstanding pressure MPa	1.5		1.05			
Fluid temperature °C	5 to 60 (no freezing) Note 2					
Ambient temperature °C	0 to 60 (no freezing)					
Port size Rc	3/4	1	1 1/4	1 1/2	2	
Product weight kg	0.8	1.4	4.0	4.0	4.0	
Applicable cylinder bore size mm	φ 100 to φ 200	φ 140 to φ 250	φ 300 to φ 450	φ 300 to φ 450	φ 450 to	
Number of needle turn	10	10	10	10	10	
Mounting attitude	The handle (nut) for flow control must be installed vertically facing upward or downward.					
Free flow	Flow ℓ/min (ANR)	10300	17400	68000	68000	97000
	Effective sectional area mm ²	155	260	1000	1000	1500
Controlled flow	Flow ℓ/min (ANR)	8300	18700	68000	68000	91000
	Effective sectional area mm ²	125	280	1000	1000	1400

Note 1: Flow rate is atmospheric pressure conversion value at pressure 0.5MPa.

Note 2: Freezing could occur by adiabatic expansion depending on air quality (dew point).

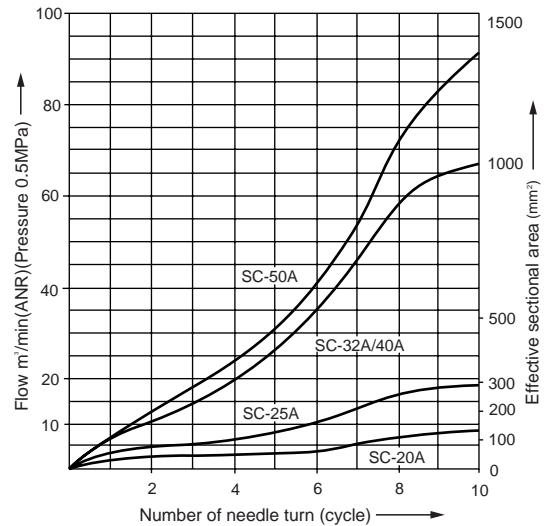
How to order

SC — **20A**

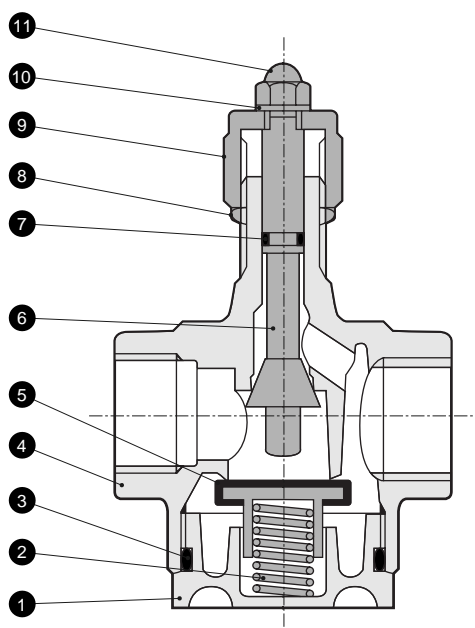
● Port size

Symbol	Descriptions
A Port size	
20A	Rc3/4
25A	Rc1
32A	Rc1 1/4
40A	Rc1 1/2
50A	Rc2

Flow characteristics



Internal structure and parts list



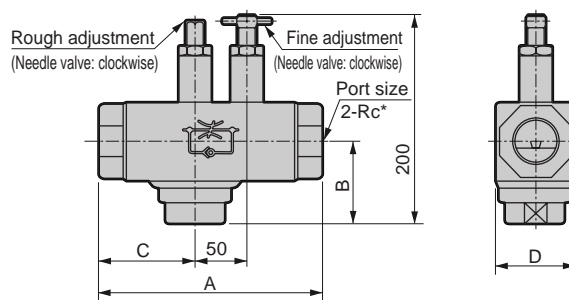
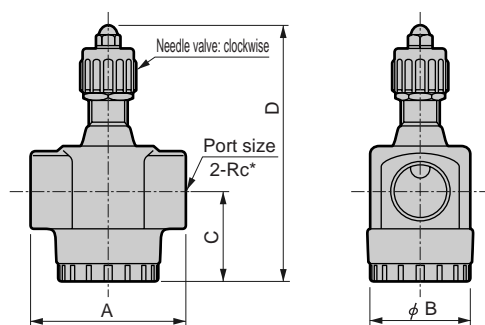
No.	Parts name	Material
1	Cap	Zinc alloy die casting
2	Spring	Stainless steel
3	O ring	Nitrile rubber
4	Body	Zinc alloy die casting
5	Valve seat	Brass
6	Rod	Brass
7	O ring	Nitrile rubber
8	Nut	Carbon steel
9	Nut	Zinc alloy die casting
10	The internal tooth washer	Stainless steel
11	Cap nut	Steel

Dimensions



● SC- 20
25 A

● SC- 32
45 A
50



Model no.	A	B	C	D	Port size
SC-20A	74	50	42	115	Rc3/4
SC-25A	90	61	55	156	Rc1

Model no.	A	B	C	D	Port size
SC-32A	210	77	92	75	Rc1 1/4
SC-40A	210	77	92	75	Rc1 1/2
SC-50A	222	79	96	84	Rc2

⚠ Safety Precautions

When connecting SC Series, do not tighten the product with a torque more than right.

- When using in low pressure range (0.05MPa or less), when piping, etc. before and after the product are restricted excessively, when cylinder speed is rapid, or when differential pressure is small, vibration and sound are easily generated.
- When tightening, do not tighten needle or lock nut section excessively. (Tightening torque approx. 3N·m)

Port thread	Tightening torque N·m
Rc3/4	51
Rc1	70
Rc1 1/4	80
Rc1 1/2	85
Rc2	120

Refrigerating type dryer
Desiccant type dryer
High polymer membrane dryer
Air filter
Auto. drain / others
F.R.L. (Module unit)
F.R.L. (Separate)
Compact F.R.
Precise regulator
F.R.L. (Related products)
Clean F.R.
Electro pneumatic regulator
Air booster
Speed control valve
Silencer
Check valve / others
Joint / tube
Vacuum filter
Vacuum regulator
Suction plate
Magnetic spring buffer
Mechanical pressure SW
Electronic pressure SW
Contact / close contact cont. SW
Air sensor
Pressure SW for coolant
Small flow sensor
Small flow controller
Flow sensor for air
Flow sensor for water
Total air system
Total air system (Gamma)

Large bore size type
Speed control valve